

2016-2017

LEADERSHIP

GUIDE

TO THE
TEXAS FFA ASSOCIATION
AND
TEXAS AGRICULTURAL EDUCATION

Texas FFA Association
614 East 12th Street
Austin, TX 78701
www.texasffa.org

Resource Material For: 2016 Chapter Agricultural Quiz LDE
2016-2017 Texas FFA Officer Candidate Testing Program

LEADERSHIP GUIDE TO THE TEXAS FFA AND TEXAS AGRICULTURAL EDUCATION

- CHAPTER 1: Texas FFA and Texas Agricultural Education**
 - Section 1: What is Agricultural Education?**
 - Section 2: AFNR Instructional Program, High School and Beyond**
 - Section 3: Supervised Agricultural Experience (SAE)**
 - Section 4: Texas FFA Strategic Priorities**
- CHAPTER 2: Texas FFA History**
 - Section 1: Getting Started**
 - Section 2: Breaking Down Barriers**
 - Section 3: Alumni and Collegiate Associations**
 - Section 4: Development-Texas FFA Foundation**
- CHAPTER 3: Organizational Structure and Key Relationships**
 - Section 1: Headquarters**
 - Section 2: Board of Directors**
 - Section 3: Executive Board**
 - Section 4: Board of Student Officers**
 - Section 5: Texas FFA and the National FFA Organization**
 - Section 6: Administrative Subdivisions**
 - Section 7: Texas FFA and the Texas Education Agency**
 - Section 8: Texas FFA and Local Chapters**
 - Section 9: Texas Collegiate FFA Association**
 - Section 10: Texas FFA Alumni Association**
 - Section 11: Texas FFA Staff**
 - Section 12: Communications**
 - Section 13: Funding, Financial Management and Tax Status**
 - Section 14: Other Agricultural Education Entities**
- CHAPTER 4: TAKING THE FIRST STEP—JOINING THE TEXAS FFA**
 - Section 1: Active Membership**
 - Section 2: Other Membership Types**
- CHAPTER 5: Leadership Outcomes...Conceptual Skills**
 - Section 1: Texas FFA Effective Chapters Doctrine**
 - Section 2: Student Leadership**
 - Section 3: Camps, Conferences, Conventions**
- CHAPTER 6: GETTING INVOLVED—CAREER AND LEADERSHIP DEVELOPMENT**
 - Section 1: Advanced Degrees and Awards**
 - Section 2: Agriscience Fair**
 - Section 3: Leadership Development Events**
 - Section 4: Career Development Events**
 - Section 5: Speaking Development Events**
 - Section 6: Texas FFA Scholarship Program**
- Appendix**
 - Texas FFA Association Constitution/Bylaws**
 - Texas FFA Leadership Development Framework**
 - Texas Agricultural Education Organizational Chart**
 - Texas FFA Past Presidents, National FFA Officers**
 - Texas Education Code 29.182**

CHAPTER 1: TEXAS FFA AND TEXAS AGRICULTURAL EDUCATION

The Texas FFA is the student leadership development arm of Texas Agricultural Education, a coalition of interrelated, interdependent yet independently governed entities committed to delivering exciting opportunities to Texas students through the Agriculture, Food and Natural Resources Education System. Each organization is led by an executive director and respective board of directors.

			
Texas FFA Association	Texas Education Agency Agriculture, Food and Natural Resources	Texas FFA Foundation	Vocational Agriculture Teachers Association of Texas
Student Leadership and Career Development, Curriculum Support	Instructional Program Standards, Certification, Curriculum Development	Fundraising, Strategic Partnerships	Teacher Services, Continuing Education, Legal, Political Advocacy

AGRICULTURE, FOOD AND NATURAL RESOURCES INSTRUCTION

Section 1 - What is Agricultural Education?: Agricultural education prepares students for successful careers and a lifetime of informed choices in global agriculture, food and natural resources systems. The Agriculture, Food and Natural Resources cluster is one of sixteen federally recognized divisions for Career and Technical Education (CTE) in public secondary and postsecondary schools. A Career Cluster is a grouping of occupations and broad industries based on commonalities. The sixteen Career Clusters provide an organizing tool for schools, small learning communities, academies, and magnet schools. CTE in Texas utilizes each of the sixteen clusters. State level instructional oversight is provided by the CTE staff at the Texas Education Agency.

The Agriculture, Food and Natural Resources (AFNR) cluster includes occupations and careers in the planning, implementation, production, management, processing and/or marketing of agricultural commodities and services, including food, fiber, wood products, natural resources, horticulture, and other plant and animal products. It also includes related professional, technical and educational services. The AFNR cluster has been subdivided into eight distinctive career pathways: Agribusiness Systems, Animal Systems, Biotechnology Systems, Environmental Service Systems, Food Products and Processing Systems, Natural Resources Systems, Plant Systems and the Power, Structural and Technical Systems pathways.

More than 1,272 secondary schools across the state offer instruction in Agriculture, Food and Natural Resources. There are 24 AFNR courses which provide rigorous and challenging opportunities for more than 180,000 young Texans. AFNR courses are found in rural, suburban and urban school districts and the classrooms and laboratories reflect a diverse and balanced gender and ethnic population.

CAREER AND TECHNICAL EDUCATION CAREER CLUSTERS

Agriculture, Food and Natural Resources
 Architecture and Construction
 Arts, A/V Technology and Communications
 Business, Management and Administration
 Education and Training
 Finance
 Government and Public Administration
 Health Science
 Hospitality and Tourism
 Human Services
 Information Technology
 Law, Public Safety, Corrections and Security
 Manufacturing
 Marketing, Sales and Service
 Science, Technology, Engineering and Mathematics
 Transportation, Distribution and Logistics

In Texas it is recognized that many occupations cross cluster boundaries or could fit into more than one cluster. For this reason AFNR programs in public secondary schools in the state have options to expand the learning opportunities of students by utilizing courses and curriculum which are found in several other clusters. A total of 19 courses from the Architecture and Construction, Arts, A/V Technology and



Communications, Manufacturing, Marketing, Sales and Service, STEM and Transportation, Distribution and Logistics clusters can be combined with specific courses from the AFNR cluster in order to form programs of study which lead to student success and provide the academic knowledge and technical skills necessary to advance into a specific career choice.

The agricultural education delivery model contains three primary components which work in harmony to provide students with a well-rounded educational experience and skills which will easily transfer into a wide variety of employment opportunities in the industry. The instructional component includes the classroom instruction, laboratory experiences and work-based learning opportunities provided through the state approved curriculum.

Section 2 - AFNR Instructional Program, High School and Beyond: In 2013, the 83rd Texas Legislature established the new Foundation High School Program as the default graduation program for all students entering high school beginning in 2014-15. The Foundation High School Program provides students with a flexible approach to pursuing their interest and insuring readiness for college or a career. At the base of the Foundation High School Program is a 22-credit core that provides the minimum requirements to earn a Texas high school diploma. In addition the Foundation High School Program provides opportunities for students to earn one or more of the five available endorsements (26-credit option). Along the way students may also qualify for the Distinguished Level of Achievement and/or Performance Acknowledgments.

As mentioned, Texas students now have the opportunity to customize their high school education by selecting one of five endorsements. Students must select one of the endorsements by time they enter the ninth grade. All five endorsements may not be offered at every high school. Students earn an endorsement by completing the curriculum requirements for the endorsement, including 4th credit of math and science and two additional elective credits. Students enrolled in a coherent sequence of Agriculture, Food and Natural Resources (AFNR) courses will normally meet the requirements to earn the Business and Industry endorsement. AFNR can often times also lead to the Science, Technology, Engineering and Mathematics (STEM) endorsement. Details for Texas graduation plans are found in the Texas Administrative Code. (19 TAC Chapter 74, Subchapter B.)

<p>Texas High School Foundation Program ENDORSEMENTS</p> <p>Science, Technology, Engineering and Math (STEM) Business and Industry Public Services Arts and Humanities Multidisciplinary Studies</p>

Most of the very best jobs available now and in the future require education and training beyond a high school diploma. Whether you intend to pursue a high-demand, industry workforce credential from a community or technical college or a traditional four-year degree from a university, the choices made in high school will determine your future options. To best prepare yourself now for the transition to post-high school education or quality workforce training, choosing and taking the right classes is essential. The Distinguished Level of Achievement will ensure the best preparation for your future. The Distinguished Level of Achievement opens a world of educational and employment opportunities for you beyond high school. The Distinguished Level of Achievement will allow you to compete for Top 10% automatic admissions eligibility at any Texas public university, position you among those first in line for a TEXAS Grant to help pay for university tuition and fees, and ensure you are a more competitive applicant at the most selective colleges and universities.

A Performance Acknowledgement can add additional value to your high school experience. Performance Acknowledgements are earned by successfully completing a dual credit course, demonstration of bilingualism and biliteracy, meeting established performance levels on PSAT, ACT's Plan, SAT or ACT,

successful completion of Advanced Placement or International Baccalaureate exams or by earning a nationally or internationally recognized business or industry certification or license.

Involvement in FFA and participation in FFA activities can make meeting the requirements of the Foundation High School Program much easier. FFA provides opportunities that will enhance a student's ability to earn endorsements, receive the Distinguished Level of Achievement and be recognized for earning Performance Acknowledgements.

Section 3 - Supervised Agricultural Experience (SAE) A Supervised Agricultural Experience program (SAE) is a key component of agricultural education. While working on an SAE project, students learn to apply the concepts and principles taught in their agriculture classes to real-world problems and scenarios. A student selects an SAE project based on his or her interest in one of four areas:

- **Exploratory, Improvement or Supplemental** - Learn about the big picture of agriculture and its many related careers.
- **Research** - Conduct research and analyze information to discover new knowledge.
- **Entrepreneurship** - Plan and operate an agriculture-related business.
- **Placement** - Work for a business or individual, either for pay or for the experience. Includes directed school laboratory placement.

SAE is a required component of all AFNR courses in Texas. SAE includes the skills necessary to plan, propose, conduct and evaluate the experiential learning activity.

The third component of the agricultural education model is the FFA, the Career and Technical Student Organization for AFNR students. FFA is recognized by the Texas Legislature as an integral part of the AFNR instructional program (Texas Education Code 29.182). FFA activities support classroom instruction through competitive events which assess learning, foster excellent SAE's through awards and degrees and provide hands-on leadership and personal skill development through the student-led organization.

Section 4 - Texas FFA Strategic Priorities: The Texas FFA Association has identified six strategic priorities for the organization:

1. ***Ensuring A Sound Financial Future*** Ensure a financially sound future for the Texas FFA and its programs as a partner with the Texas FFA Foundation.
2. ***Effective Communications*** Develop proactive, external communications strategies which promote positive public perception of agricultural education and FFA and highly effective internal communications networks which reach students, teachers, volunteers and other stakeholders and supporters.
3. ***Agricultural Achievement and Career/Professional Development*** Develop and support programs which encourage excellence and diversity in supervised agricultural experience programs, competitive activities which are industry relevant, have a clear tie to the Agriculture, Food and Natural Resources instructional program and activities which are cross-curricular and demonstrate the interdisciplinary nature of agricultural education.
4. ***Leadership and Personal Skill Development*** Encourage excellence in leadership through programs which support the development of effective local programs of activities, instill leadership values consistent with the principles of the FFA and develop skills for a life of career and personal success and leadership in industry and government roles.
5. ***Diversity*** Support strategies to stimulate diversity in the ranks of students and professional educators.
6. ***Academic Excellence*** Stimulate academic excellence by development and support of programs which stimulate intellectual development by broadening scholarship opportunities for students who seek to pursue post-secondary education.

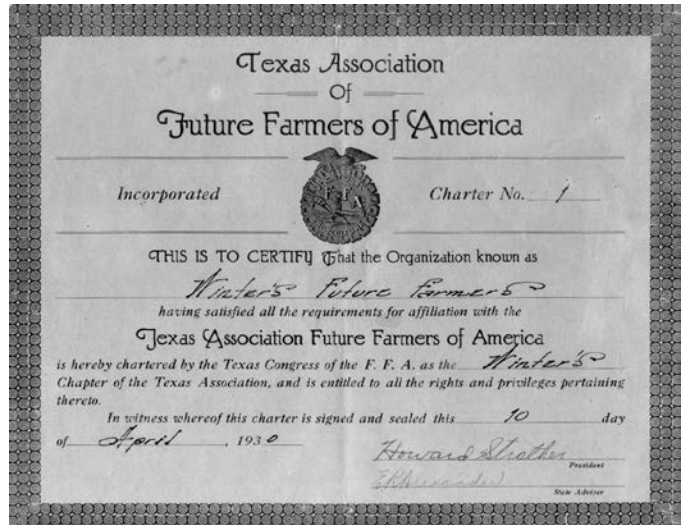
CHAPTER 2: TEXAS FFA HISTORY

Section 1 - Getting Started: For agricultural education, the most influential public policy piece was the Smith-Hughes National Vocational Education Act of 1917 which provided federal funds for vocational agriculture to be taught in public secondary schools. However, in Texas, instruction in agriculture pre-dated this federal legislation. Mr. B. Youngblood of Henderson introduced an elementary agriculture course in 1903 in the public schools of that east Texas community. In 1907, the Texas Legislature mandated that, with

the exception of schools with an academic population of more than 300, all schools in the state would be required to offer the elementary agriculture class. Beginning in 1909, teacher training in agriculture was mandated at designated Texas colleges.

President Woodrow Wilson signed the Smith-Hughes Act into law on February 23, 1917, but the act required legislative acceptance by each state. Governor James Ferguson made the acceptance of the Smith-Hughes Act an item for the first of three called special sessions of the 35th Legislature in 1917. State Senator Claude B. Hudspeth of El Paso filed Senate Bill 54, which became law on June 15 to take effect 90 days later. Five new vocational agriculture departments were approved that fall by the State Board for Vocational Education which was formed pursuant to Smith-Hughes. Three of the new programs were approved to begin December 1: Corsicana State Orphans Home, Penelope and Yancey. The Hillsboro and Tuleta programs were approved to begin on January 1, and February 1, respectively. In all, 32 schools were approved to teach vocational agriculture in the 1917-18 school year.

Similarly, vocational agriculture departments were established throughout the nation and subsequently many states began forming regional and state future farmer organizations. Virginia established the Future Farmers of Virginia, which became a model for other states and ultimately for the formation of a national organization. The first Future Farmers of Texas chapter was organized at Winters in 1928 and the first annual meeting of the FFT was held at College Station on April 22, 1929. Arthur Ellis of New Waverly was elected president of the fledgling organization, but resigned his office a few months later, allowing E. J. Hughes of Dublin to serve as acting president until the state association met again in Dallas in October of the same year. At that meeting, Howard Strother was elected president of the FFT, and seven days later, a state charter for a Texas FFA Association was issued by the National Future Farmers of America. Thus, Strother became the first president of the Texas FFA. Agricultural and Mechanical College of Texas (Texas A&M University) teacher educator E. R. Alexander is credited as being the father of the Texas Future Farmer movement and served as the organization's first advisor until 1931. On April 10, 1930, the Winters chapter was the first of more than 13 chapters from the Texas Association to be officially chartered by the National Future Farmers of America.



Winters Future Farmers of America was issued the first local chapter charter in 1930. The document was signed by the Texas FFA's first president, Howard Strother and the first state advisor, E. R. Alexander.

Section 2 - Breaking Down the Barriers: Segregation is part of our society's history, and the history of agricultural education mirrors societal norms and attitudes. In our nation's era of segregation, it was deemed legal and appropriate for African-American students to be relegated to "separate but equal" schools, a practice affirmed by an 1896 U.S. Supreme Court decision, *Plessy v. Ferguson* that upheld state segregation laws. Thus, a separate, parallel organization for agriculture students was created on August 4, 1935—the New Farmers of America. The NFA and FFA shared the same core values and had similar traditions. In 1954, the racial wall that separated white and black began to crumble with the landmark U.S. Supreme Court decision *Brown v. Topeka Board of Education* that held that separate schools were inherently unequal. The last two state presidents elected under this segregated system were A. D. Pinson of Neches (NFA) and Calvin Brints of Crosbyton (FFA). Pinson



2015 marked the 50th anniversary of the FFA/NFA merger. To celebrate this historic occasion, A.D. Pinson attended a special ceremony on-stage and was presented with a replica of his original NFA officer jacket.

was subsequently elected as national NFA president, serving in that capacity when the NFA was merged into the FFA in 1965.

In 1972, Fred McClure of San Augustine became the first African-American member to serve as president of the Texas FFA and later became the first to serve as a national officer. He served as the National FFA Secretary in 1973-74, student body president at Texas A&M University (the first African-American to do so) and an adviser to two U.S. presidents (Ronald Reagan and George H.W. Bush). In 1985, Aaron Alejandro became the first Hispanic member to be elected president of the Texas FFA. He now serves as Executive Director of the Texas FFA Foundation.



In 1972, Fred McClure of San Augustine became the first African-American member to serve as president of the Texas FFA. McClure would later serve as National FFA Secretary. Aaron Alejandro was the first Hispanic member to serve as Texas FFA president in 1985.

For the first 40 years of its existence, the Future Farmers was exclusively male. In 1935, the delegates to the national FFA convention passed a resolution denying participation to any state association that allowed girls to be listed on the state's official roster. Girls were allowed to participate as FFA Sweethearts and some chapters designated a female student to be the chapter's typist. For several years there was considerable discussion and debate concerning the question of female membership. In 1968, Texas FFA President Bill Sarpalius, using the female membership issue as a bargaining chip to secure additional national *delegate representation*, moved the motion to admit girls to membership in the national organization. At the 1969 Texas FFA Convention in Fort



In 1976, Becky Leake of Sherman became the first female FFA member in Texas to be elected to state FFA office

Worth, with Sarpalius presiding, delegates approved an amendment to the state's constitution giving the green light to admit girls to membership in the Texas FFA. Becky Leake of Sherman became the first female member to serve as a Texas FFA state officer; Erica Clark of Mansfield became the first female to be elected president of the Texas FFA Association in 1991.

Section 3 - Organization of Statewide Alumni and Collegiate Associations:

Engaging the Alumni Interest in launching an alumni association began as early as 1936 when the Texas FFA adopted language in its constitution that encouraged the formation of alumni chapters, but there is no record of any of these local organizations. A group of past recipients of the state and American degrees known as the Gold Key Club emerged. Beeville organized the first of these chapters, but the movement was short-lived, fading away at the close of the 1930's. In 1950 a group of former members founded the Texas Future Farmer Alumni Association. This effort was short-circuited by the military draft that enlisted most of the organization's leadership. Another group convened in the summer of 1953 calling themselves the Young Farmers of Texas. Later this organization would become linked to the agricultural education's adult education component. The Texas FFA Alumni Association as it is known today was organized in 1971. Former Texas FFA Executive Secretary E.C. "Dick" Weekly was the Texas FFA Alumni Association's first president.

Organizing the State Collegiate Association Collegiate FFA chapters have been in existence since the earliest days of the FFA. Their activities, however, were confined to reaches of each local college or university chapter. In 2001, collegiate representatives met at the state FFA convention in Houston to initiate the process of developing a statewide organization, a process that culminated in the adoption of a state collegiate FFA constitution at the 75th Texas FFA Convention in Houston in 2003. Vanessa Brossman of Sam Houston State University was Texas's first Collegiate FFA State President.

Section 4 - Development -Texas FFA Foundation: The Texas FFA Foundation came about, in part, due to the gifts of C. J. "Red" Davidson, a Fort-Worth oilman who, on his morning walk in downtown Fort Worth happened onto a group of well-dressed and groomed blue-corduroy-clad boys streaming into the Tarrant County Convention Center. Impressed with their conduct and appearance, he walked into the 41st Texas FFA Convention, spending the better part of the morning watching the state officers conduct the business of the state association and give eloquent presentations. This was the beginning of a relationship that resulted in the



establishment of the C. J. “Red” Davidson Scholarship. Upon Mr. Davidson’s passing, stocks were given to ensure the perpetuation of the scholarship program. The stocks quickly grew in value, and the Texas FFA’s leadership realized the need to create a foundation to manage the C.J. “Red” Davidson assets and to raise funds to ensure the future of the Texas FFA. That foundation became a reality in 1987. Jay Eudy, then director of agricultural science and technology was the first chairman of the Texas FFA Foundation Board of

Directors.

In 2000, a focus group representing a cross section of agricultural education stakeholders—teachers, state staff, farmers, ranchers and agribusiness men assembled in Austin to chart the future needs of the organization. This group became known as the

In 2005, the announcement that the Texas FFA Foundation Capital Campaign had met and surpassed its three-year goal brought the confetti down as convention Texas FFA celebrated this significant milestone in an effort to build a \$15 million endowment. The three-year goal was the first of the three stages in the overall endeavor.

“Texas FFA Leadership Council.” The needs and priorities were captured in a partnership menu for a capital campaign to raise \$15 million dollars to provide an endowment to earn enough investment

interest to support the goals named by the leadership council.

The Texas FFA Foundation Capital Campaign kicked off at the 74th Texas FFA Convention in Fort Worth in 2002 under the leadership of Capital Campaign Co-Chairs Paul Engler, President and CEO of Cactus Cattle Feeders in Amarillo and Anne Anderson, an Austin-based strategic consultant. The campaign was launched with a \$1.3 million gift from the Ford Motor Company and Texas Ford dealers. At the 77th Convention in 2005, the Texas FFA Foundation announced that its three-year goal of \$3.5 million had been met and surpassed, with more than \$4.2 million raised. In 2006, the foundation secured the FFA’s first title co-sponsors of the state convention. Justin Brands and Farm Credit Banks of Texas teamed up to underwrite a significant portion of each convention since then, a relationship that has continued since then.

A portion of the Ford gift made possible the construction of the Agricultural Education Texas FFA Leadership Center in Austin. Prior to its construction, all entities were housed in the VATAT headquarters building at the same address, a building that was built to accommodate only the VATAT and its credit union. Groundbreaking for the project took place in April of 2003, the building was finished in November of the same year with official ribbon cutting ceremonies in January, 2004.

Today the Texas FFA Foundation continues its mission to permanently endow Texas FFA programs by forging corporate partnerships, encouraging individual giving and seeking to engage former members in giving back to the program that, for many, was the foundation of a successful career. Current corporate partners include CEV Multimedia Ltd., CHS Foundation, Farm Credit, Ford Motor Company/Texas Ford Dealers, Justin Boots, La Quinta Inn and Suites, Mahindra Tractors-USA, McCoy's Building Supply Centers, Priefert Ranch Equipment, Texas Farm Bureau, and the Texas National Guard. Scholarship sponsors are Fort Worth Stock Show Syndicate, the Fort Worth Stock Show, Houston Livestock Show and Rodeo, the Richard Wallrath Educational Foundation, Rodeo Austin, San Antonio Livestock Show and Rodeo, and the Texas FFA Foundation.

In addition to corporate interests, individuals have also joined the effort to endow the Texas FFA into perpetuity. Former Texas FFA President and National Officer Jim Prewitt, now a prominent Dallas-area nurseryman became the catalyst for the development of the agriscience fair scholarship program. He is one of the leading individual contributors to the Texas FFA Foundation. In 2005, Centerville Rancher Richard Wallrath made Texas FFA history by becoming the Texas FFA Foundation’s all-time leading contributor with gifts totaling more than \$1.5 million.

CHAPTER 3: ORGANIZATIONAL STRUCTURE AND KEY RELATIONSHIPS

Section 1 – Headquarters: The Texas FFA Association is headquartered at the Ford Agricultural Education Texas FFA Leadership Center two blocks east of the Texas State Capitol at 614 East 12th Street. The building, completed in 2003, made possible by a gift from Ford Motor Company and Texas Ford Dealers and houses other Texas Agricultural Education entities—the Texas FFA Foundation, Vocational Agriculture Teachers Association of Texas and the VATAT Credit Union. The Texas FFA Association offices occupy the building’s ground floor, and the other entities are housed on the second floor. Board meetings hosted in Austin are held in the third floor conference room. FFA members are encouraged to visit the Leadership Center when coming to or passing through Austin. The conference room may be available for chapter officer training.

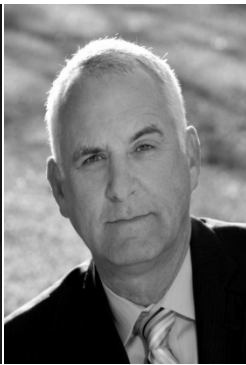


was
also

Section 2 - Board of Directors: The Texas FFA Association provides leadership and management for active, junior, collegiate and alumni FFA members. A 16-member board of directors, comprised of active agricultural educators, business and industry representatives and the managerial leadership of the VATAT and Texas FFA Foundation, meets quarterly and provides governance and leadership to the state association.



Tom Maynard is the Executive Director of the Texas FFA Association



Jack Winterrowd of Cedar Park serves as the 2015-16 Chairman of the Texas FFA Board of Directors.

by the Vocational Agriculture Teachers Association of Texas. Six business and industry representatives, a teacher educator, a school administrator and an additional Agriculture, Food and Natural Resources teacher are elected to the board by a nominating committee process. The executive directors of the VATAT and Texas FFA Foundation serve on the board. The State Program Director for Agriculture, Food and Natural Resources, Texas Education Agency along with representatives of the alumni and collegiate associations serve as ex-officio members of the board.

Section 3: Executive Board The Texas FFA Association’s executive board includes the chairman of the board of directors, the executive directors of the Texas FFA Association, Texas FFA Foundation, Vocational Agriculture Teachers Association of Texas, the CTE Statewide Coordinator for Agriculture, Food and Natural Resources, and the state FFA president or another designated student officer. The executive board interprets policy and renders decisions deemed to be more than a management decision, handles appeals and other administrative matters presented by the executive director.

Texas FFA Association Board of Directors

Chairperson:

Jack Winterrowd, Cedar Park

Vice Chairperson:

Ray Pieniasek, San Antonio

Treasurer:

Barney McClure, Austin

Members:

Aaron Alejandro, Austin

Liz Bradford, Dallas

Dr. Scott Burris, Lubbock

Tammy Christian, Penelope

Shane Crafton, Henrietta

Tammy Glascock, Pilot Point

Horace Hodge, Prairie View

Natalie Koehler, Meridian

Stefan Marchman, Fort Worth

Michael Meadows, Simms

Dr. Thomas Randle, Rosenberg

Dr. Edward Romero, Commerce

Jerome Tymrak, Kingsville

Ex-officio Board Members

Ronald Whitson, Austin

Kelly White, Kyle

Executive Director

Tom Maynard, Austin

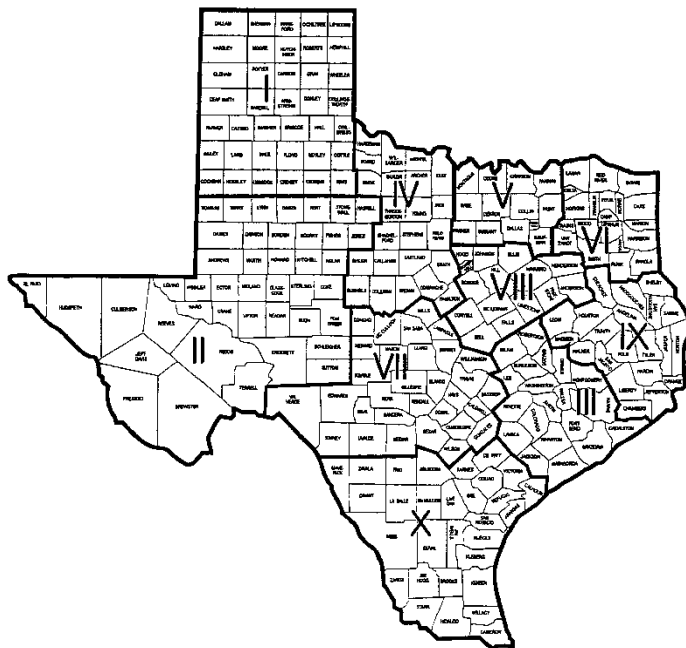
Section 4 - Board of Student Officers: A team of ten Texas FFA State Officers represent each of the ten area associations within Texas FFA. These student officers work in partnership with the board of directors to develop policy for the Texas FFA Association and provide student leadership to Texas FFA members. Each area association selects one candidate to serve on the state officer team during the annual state ffa convention. Once all areas have selected a representative, the delegates then elect a president and first vice president from the final ten candidates. The remaining eight officers serves as vice presidents from their respective area associations. All officers have responsibilities to the state association and leadership duties in their areas. State officers serve a one-year term.



2016-2017 Texas FFA Officers

Left to Right: Charlie Hoppe, Area 7; Carlie Hollingsworth, Area 2; Evagail Calvert, Area 8; Christian Cavazos, Area 10; Conner Mckinzie, Area 4; Jake Traylor, Area 6; Creager Davis, Area 9; Kayla Hanson, Area 3; Macie Clugston, Area 5; John Smithwick, Area 1

Section 5 - Texas FFA Association and the National FFA Organization: Texas FFA Association is a chartered state association of the National FFA Organization. The national organization can be described as a confederation of state associations, each governed by its own constitution, bylaws and policies in harmony with the broad framework established by the National FFA Organizations constitution, bylaws and by Public Law 105-225 (previously 81-740). The National FFA Organization does not exercise direct oversight, but establishes boundaries through the provisions of these policies and governance over state association operations.



Texas FFA Area Association Map: Texas FFA is divided into ten administrative areas which are broken along county lines and described in the Texas FFA bylaws.

Section 6 - Administrative Subdivisions, districts and areas: The state is divided into ten administrative areas which operate as semi-autonomous associations. Texas has had as many as 12 areas, since for many years, these areas were a function of state education agency staffing. At one time, each of these areas was the territory for an area supervisor who provided direct oversight of local departments in their respective area. Currently, each area has a leadership structure headed by an area coordinator and/or area teacher president. Each area is further divided into districts. The number of districts per area ranges from four to seven, and there are 57 districts in the state. According to the state bylaws, the state must consider re-alignment at least every ten years and the areas must consider re-districting at least every five years. On July 13, 2016 during the 88th convention business session, delegates across the state voted in favor of area realignment. Two new areas will have until August 2018 to create and implement governing entities for a fully functioning area.

Section 7 - Texas FFA Association and the Texas Education Agency: The Texas Education Agency provides leadership for Texas education and is headed by State Education Commissioner, Mike Morath, who



Mike Morath
Commissioner of
Education

Ronald Whitson
CTE Statewide Coordinator for
Agriculture, Food and Natural
Resources.

was appointed by Governor Greg Abbott in 2016. The 15-member State Board of Education adopts instructional standards called Texas Essential Knowledge and Skills (TEKS), textbooks and graduation plans, approves charter schools and manages the Permanent School Fund, a \$38 billion endowment that funds instructional materials and technology and guarantees bonds approved by local school districts. State Board of Education members are elected to four year terms in the November general election. Its chairman is nominated from the members of the board by the Governor and confirmed by the State Senate. Currently, Donna Bahorich of Houston chairs the state board. For a significant portion of its history, the Texas FFA Association operated through the Texas Education Agency, and FFA staff members were TEA employees. In 1998, the FFA was moved outside of the agency and a board of directors made up of agricultural educators and industry representatives was established to provide leadership for the organization. The Texas FFA

Association's executive director is employed by the Board of Directors. Ronald Whitson is the Statewide Career and Technical Education Coordinator for Agriculture, Food and Natural Resources and provides instructional and curricular leadership for Texas agricultural education. In this role, Mr. Whitson is responsible for curriculum development, textbook adoption, instructional program standards and teacher certification as well as teacher professional development. FFA is an integral part of the Agriculture, Food and Natural Resources instructional program, and it is critical that the FFA remain tied to this foundation. Although the relationship of the TEA and FFA has changed in recent years, the program director remains actively engaged in the leadership of the Texas FFA as an ex-officio member of the board of directors and as a member of the executive board.

Section 8 - Texas FFA Association and Local Chapters: The Texas FFA Association issues and revokes charters in accordance to the mandates of the state association's constitution, bylaws and board-adopted policies, provides support services to local chapters and administers events which support the agricultural education instructional programs. Direct oversight of local programs is the domain of local boards of trustees and administrators. Texas FFA has developed an "Effective Chapters" document that provides basic guidelines which schools may use as a reference for leadership and oversight of local FFA chapters. Each chapter has requirements mandated by the state constitution and bylaws to remain in good standing with the state association. Pursuant to National FFA Organization policy, the state association has stewardship of the FFA emblem and trademarks, and the state association is duty bound to act when these are used inappropriately.

Section 9 - Texas Collegiate FFA: The purpose of the Texas Collegiate FFA Association is to continue the development of premier leadership, personal growth and career success at a higher level and in the context of a collegiate environment. Leadership for the organization is vested in the Texas Collegiate FFA Senate, consisting of two representatives from each affiliated two-year or four-year institution. The collegiate association operates under the oversight of the Texas FFA Board of Directors. Six student officers are elected annually. Adult leadership is provided by the collegiate advisors of the student officers and two executive advisors who serve longer terms to ensure a degree of continuity in the organization. The faculty advisors for the Collegiate



2016-2017 Texas Collegiate FFA Officers -
President: Dylan Bacon, Vice President: Brittany Myers
Secretary: Malia Marion, Treasurer: Kayla Lucio
Reporter: Savanna Grounds, Sentinel: Reagan Cooper
Student Advisor: Robin Hicks, Historian Autumn Wallen

FFA are Dr. David Frazier of Tarleton State University, and Dr. Doug Ullrich of Sam Houston State University. The Texas Collegiate FFA holds meetings in conjunction with the Texas FFA Convention and the State Agriculture, Food and Natural Resources Professional Improvement Conference. Competitions hosted by CFFA are designed to enhance its members' professional skills and to position them for entry into the job market.

Section 10 - Texas FFA Alumni Association: The Texas FFA Alumni Association operates under the auspices of the Texas FFA Board of Directors in accordance to policies contained in the organization's memorandum of understanding and operating policies. The purpose of local alumni affiliates is to provide support to local Agriculture, Food and Natural Resources departments and the state alumni association is to provide assistance to local affiliates. A 23-member alumni council provides direction and leadership to the organization in harmony with administrative oversight and board policies and directives. Texas FFA Alumni accounts are managed by the Texas FFA Association staff. The Texas FFA Alumni Association holds their annual meeting in conjunction with the state FFA convention and provides financial support to the Texas FFA Association and the Texas FFA Foundation. Kelly White of Kyle serves as the president of the Texas FFA Alumni Association. The Past State Officers Alumni is a statewide alumni association affiliated with the Texas FFA Association. Steve Mosley serves as the 2016-17 Past State Officer Alumni Chairman.



Kelly White, Texas FFA Alumni President



Left to Right: Carolee Frampton serves as the Budget and Finance Coordinator; Gwenn Winsauer serves as the Assistant to the Executive Director/Membership Coordinator; Ashley Dunkerley serves as the Communications Coordinator; Tricia Sullivan serves as the Student Recognition and Scholarship Coordinator; and Tyler Koch serves as Director of Leadership Development.

Section 11 - Texas FFA

Staff: The Texas FFA Association has five employees. The executive director, student coordinator, leadership development coordinator and membership services coordinator are full-time Texas FFA Association employees. The budget and finance coordinator is

an employee of the Texas FFA but shares financial management responsibilities with the VATAT, Texas Young Farmers and the Texas Career and Technology Council. The VATAT communications coordinator is currently the editor of the Texas FFA News, as well as the manager of Texas FFA social media.

Section 12 – Communications: Texas FFA Association disseminates news and information through a variety of media avenues.

- ***Texas FFA News Online*** is the official online news publication of the Texas FFA Association. The news site highlights agricultural issues, FFA activities and events as well as recognizes FFA members for their accomplishments. Along with articles and pictures, the Texas FFA News Online hosts videos, links and other interactive content. Sharing stories and spreading content is now easier with the social media integration of Facebook, Twitter, Instagram and the ability to email articles to other readers.
- ***Convention Media Program*** There are two different features of the Convention Media program. The first is *Texas FFA News Online: Convention Edition*, the official online news of the Texas FFA Convention that is published for FFA members, by FFA members (news.texasffa.org). The second feature is *The Convention Report*, a newscast video scheduled to air during the final general session. Texas FFA members apply for positions on the Convention Media staff and work throughout the

convention to produce interesting news pieces. Through their involvement, members gain real-life, hands-on experience in the operations of the current media trade.

- **www.texasffa.org** is the Texas FFA Association’s Web site. General information, policies, event rules, support materials, news and updates can be found online. Additionally, websites for collegiate and alumni associations and the other members of Texas Agricultural Education can be accessed from the Texas FFA’s home on the World Wide Web.
- The Texas FFA Network is a network of local chapter websites developed through a Texas FFA Foundation partnership with Wiegat Graphics using the **FFANow** Chapter Website System. Local chapters can establish their online web presence by creating their own websites using the custom, easy-to-use online system provided through this partnership.
- The **My Texas FFA** Initiative combines two innovative ways for you to connect with us. **www.mytexasffa.org** is an interactive promotional website designed in partnership with the Texas FFA Foundation. **www.mytexasffa.org** contains video footage of agricultural education and FFA testimonials from students, parents, educators, sponsors and former members. The all-new **My Texas FFA Mobile App** was launched the summer of 2016 that will give you more unprecedented access to inside information, corporate sponsor offers, peeks behind the scenes as well as a super easy way for you to help spread the word about how great you think your Texas FFA is!

Section 13 - Funding, Financial Management, Tax Exempt Status: Revenues to fund Texas FFA Association activities come from membership dues, swine validation, sponsorships and contributions, convention registration fees, federal monies through the Carl Perkins federal career and technology education fund and to a smaller extent, magazine advertising and investments. The Texas FFA Foundation provides funding for a portion of the scholarship programs, convention events and for special projects. FFA monies are expended in accordance to audit controls and board policies. The budget and finance committee of the Texas FFA Board of Directors/Board of Student Officers develops a budget for each fiscal year to be presented to the delegate body at the annual convention business session. The Texas FFA Association undergoes an annual audit conducted by an independent auditor. In addition, quarterly reports are submitted to the Texas Education Agency auditors. The double audit ensures the financial integrity of the Texas FFA Association. The Texas FFA Association is tax exempt educational organization pursuant to section 501(c)(3) of the federal tax code.

Section 14 - Leadership and Organizational Structure of Other Agricultural Education Entities:

Texas FFA Foundation Established in 1987 exclusively for the benefit of the Texas FFA and its members, the Texas FFA Foundation is the fundraising arm of Texas Agricultural Education. Leadership for the foundation’s activities is provided by a board of directors, and managerial leadership is administered by an executive director. The foundation board may have as many as 27 directors, but currently has 26. The foundation is in the midst of a long-term campaign to permanently endow Texas FFA programs and scholarships.

The executive director of the Texas FFA Foundation is a member of the Texas FFA Association board of directors and executive board. Like the Texas FFA Association, the Texas FFA Foundation is a 501(c)(3) non-profit organization.



Aaron Alejandro is the Executive Director of the Texas FFA Foundation

J. Ken Johnson of Houston chairs the Texas FFA Foundation Board of Directors

Vocational Agriculture Teachers Association of Texas The VATAT was established in 1940 and chartered in 1951 to provide a voice for Agriculture, Food and Natural Resources teachers in the educational policy-making process, recognition for educator achievements and professional services. Leadership for the organization comes from an elected board of directors. Directors are apportioned by teacher membership in each of the ten area associations— one director per 28 members with a minimum of two directors per area. Currently, the board has a membership of 65. An executive director



Barney McClure is the VATAT’s Executive Director and serves as the Texas FFA’s Board Treasurer

Shane Crafton of Henrietta is the 2016-17 VATAT President

provides managerial leadership and is the political officer of Texas Agricultural Education. The VATAT elects five of its members to the Texas FFA Association board of directors, the VATAT Executive Director is a Texas FFA board member by position and serves as treasurer of the board of directors. Because the VATAT engages in political advocacy, it is not eligible to have 501(c)(3) tax exempt status. It is a not-for-profit organization as described in 501(c)(6) of the federal tax code.

Teacher Education Institutions Eleven universities prepare and certify students to serve as agricultural educators. Students who wish to pursue an agricultural education career can find teacher education programs at the following Texas universities: Angelo State, Sam Houston State, Stephen F. Austin State, Sul Ross State, Tarleton State, Texas A&M, Texas A&M-Commerce, Texas A&M-Kingsville, Texas State, Texas Tech, and West Texas A&M. Each institution is governed by their respective system board of regents. All institutions actively collaborate with each other to strive for some consistency in certification programs.

VATAT Credit Union The VATAT Credit Union was established in 1961 to provide financial services to Agriculture, Food and Natural Resources teachers and their families. A seven-member board of directors provides leadership and oversight for the VATAT Credit Union, and a manager provides daily administration of its operations. The VATAT Credit Union provides financial services to the Texas FFA Association, Texas Collegiate FFA Association, Texas FFA Alumni Association, and to other entities of the Texas Agricultural Education Family. Glenn Clinard of Manor is chairman of the VATAT Credit Union Board of Directors and Rosario Rodriguez is its manager.

Young Farmers of Texas The Young Farmers of Texas was initially founded as an alumni group in 1954, but evolved into an organization of young men and women who were engaged in the adult education facet of local agriculture departments. The Young Farmers of Texas has a membership of 818 in 45 local chapters. The executive committee with 18 positions functions as a board of directors for the Young Farmers, and an Executive Secretary provides managerial leadership for the organization’s operations. The Texas FFA Association provides bookkeeping services for the Young Farmers. The Young Farmers are also a scholarship and convention sponsor. Robert Bland of Gonzales is the President. Don Beene of Fairfield is the Executive Secretary.



Don Beene of Fairfield is Executive Secretary of the Texas Young Farmers

Robert Bland of Gonzales is President of the Texas Young Farmers

CHAPTER 4: TAKING THE FIRST STEP—JOINING THE TEXAS FFA

Section 1 - Active Membership: Those who had the foresight, vision and leadership to establish the FFA wrote to future generations a promissory note—a check. The first step in cashing that check—taking advantage of this remarkable opportunity—is to join. Texas FFA membership has continuously grown since 2001. In the last ten years, net membership growth is +54,811. Texas is the nation’s largest state FFA association and the current membership level is an all-time record for any state FFA association.

Texas FFA Membership

2006	2007	2008	2009	2010	2011	2012	2013	2014	2015	2016
61,130	62,708	63,331	62,967	74,372	81,535	86,657	95,287	103,941	109,105	115,941

The Integral Nature of FFA and Agricultural Education The Texas FFA Association is the organization of, by, and for students enrolled in Agriculture, Food, and Natural Resources programs and pursuant to the Texas Education Code Section 29.182, is an integral part of the Agriculture, Food, and Natural Resources Career and Technical Education program. FFA programs are intended to be applied activities related to the classroom and laboratory instructional programs. Thus, membership guidelines

should reflect this philosophy and support co-curricular enrollment in Agriculture, Food and Natural Resources courses.

Enrollment Requirement for Active Membership Active membership in the Texas FFA Association is established by enrolling in an approved Agriculture, Food and Natural Resources course taught by an instructor with the appropriate credentials. In some cases in which the local Agriculture, Food and Natural Resources instructor is teaching agricultural classes that are not approved by the State Board of Education, but are similar in objectives to approved classes, course substitutions can be made in accordance to current board policy. With increasing graduation requirements, Texas FFA Association has established policies which support enrollment in such courses, while giving a student some degree of flexibility in maintaining continuous membership to apply for degrees and awards. After completing two consecutive courses, they may maintain continuous membership for a maximum of one year while not enrolled in a course provided they maintain an approved supervised experience program which is documented in an approved record book. The “year” referenced in this policy is a membership year which begins September 1 and ends on August 31. For the purposes of the membership eligibility policy, two classes, taken concurrently, count as two consecutive classes. After re-enrolling and completing one Agriculture, Food and Natural Resources course, a student is eligible to maintain one more year of membership without re-enrollment provided an approved, documented SAE is in place. This policy does not negate more stringent enrollment requirements for participation in leadership development events, speaking development events, career development events or any other activity that has an enrollment standard. This does not preclude local chapters and other associations from adopting more stringent enrollment requirements for membership or for holding elected offices.

Membership Dues Texas FFA Association state dues are \$5.00 for active members. In addition to state dues, a student must also pay local, district, area and national dues. National dues are also \$7.00. Local, district and area dues are set by the student delegates of the respective associations. Membership dues are used to support operations and activities that are of benefit to all members. For the fall semester, dues and rosters must be submitted electronically via the Texas FFA online roster management system by November 1 to be in good standing with the state association and March 1 for students joining in the spring semester. Dues are paid annually, and the membership year begins September 1 and expires on August 31. In 2009-10, Texas piloted a national affiliation fee model program which allows chapters to pay an affiliation fee based on total instructional program enrollment or total enrollment for an entire school district, plus other non-enrolled members. This approach allows some programs to access other funds to make students eligible to participate in the FFA activities. The membership submission deadline for delegate counts is March 10.

Other Membership Requirements In addition to meeting enrollment/SAE and dues requirements, to be a Texas FFA member, a student must show an interest in the affairs of the association by attending meetings, striving for degrees of membership, participating in other organized activities of the chapter and displaying conduct consistent with the ideals and purposes of the Texas FFA Association/Texas Association of Future Farmers of America. Local chapters may adopt more stringent membership requirements. Class enrollment is required for Texas FFA administered competitive events.

Section 2 - Other FFA Membership Types: Junior Membership Junior membership, initiated in 1987, is a feature unique to Texas. Active chapters in good standing may establish junior FFA programs for students enrolled in the local chapter’s school district who are in the third grade and eight years old. These students may continue their junior membership until they become eligible to enroll in the Agriculture, Food and Natural Resources program. Junior members must be affiliated with a chapter in the school district in which they are enrolled unless the school district approves a waiver for out of district students. School superintendents must approve and certify in writing out of district students to participate in the junior FFA program(s) of their district. Such waivers must be submitted annually. Junior members typically enjoy benefits provided by local chapters are eligible to compete in the state’s major livestock shows and in most county shows and participate in other competitions sponsored by other FFA partners. Junior members are not eligible to participate in Texas FFA governed events or cast votes in the business of the association. Junior membership dues, rosters and waivers must be postmarked by December 1.

Collegiate Membership Collegiate membership is open to all post-secondary students enrolled in a two or four-year college or university and interested in career objectives in agriculture or who have an

interest in the welfare of the agricultural industry. Collegiate members must pay local and state dues to be a member in good standing.

Alumni Membership One need not be a former member to be a member of the Texas FFA Alumni—just a supporter of agricultural education and the FFA. Those desiring to join this movement can join a local affiliate by paying \$15 annual state/national dues in addition to local dues or becoming a lifetime national member by paying a one-time dues installment of \$150. Those who wish to join but do not have a local affiliate to join may become an at-large member. Past state FFA officers and past state staff members may join the Texas FFA Association’s PSO FFA Alumni Affiliate.

Honorary Membership Local chapters have the opportunity to bestow honorary membership on those community members who have rendered outstanding service to the local program and to the cause of the agricultural education and FFA. At its annual convention, the state association bestows honorary membership on those who render outstanding service to the Texas FFA and Texas Agricultural Education. Each of the area associations have the opportunity to nominate for the Honorary Lone Star FFA Degree a number of worthy non-teacher recipients not to exceed ten percent of the number of regular state degrees from the previous year. The board of student officers, board of directors or executive director may also make nominations. Active teachers may receive the Honorary Lone Star Degree by meeting the criteria described in Section 40 of the Texas FFA Association Policy Handbook. All nominations must be approved by the student delegates.

CHAPTER 5: Leadership Outcomes...Conceptual Skills

Section 1 - Texas FFA Effective Chapters Doctrine: The Texas FFA Association defines leadership as "influence." The framework used to develop premier leadership among Texas FFA members is focused upon six areas: Action, Relationships, Vision, Character, Awareness, and Continuous Improvement. These focus areas and the skills and abilities associated were derived from research conducted by the National FFA Organization through joint collaboration of both business/industry partners and academia. These items were then vetted through partners of Texas Agricultural Education and were approved by the Texas FFA Board of Directors in 2009. The entire leadership development framework may be found in the appendix of this Leadership Guide.

The Texas FFA’s primary leadership development vehicle is the local chapter. State and area leadership development programs are geared to strengthen local chapters through which members learn to function as part of an effective team, plan and implement strategies, lead and serve on committees and fiduciary responsibility. An effective FFA chapter:

1. Strives for all agricultural education students to be FFA members because of the integral nature of FFA and Agriculture, Food and Natural Resources curricula.
2. Actively encourages and cultivates supervised agricultural experience programs that are industry relevant, appropriate to classroom and laboratory instruction, student interests, aptitudes and future goals and are documented in approved record books. Preference should be given to computer generated record keeping systems. Students are encouraged to compete for SAE-based awards and scholarships.
3. Meets or exceeds expectations listed in the National FFA Organization’s “*Essential of a Successful Chapter*” in the *Official FFA Manual*. The chapter has regular meetings and follows a constitution and bylaws and policies which comply with state guidelines. The chapter has developed and approved a written program of activities which addresses all components of the National FFA Organization’s quality standards for local chapters, and has as an intended outcome the engagement of 100% of its members in a hands-on leadership development experience. The chapter provides leadership training for chapter officers and other recognized leaders.
4. Provides instruction in basic leadership skills such as parliamentary procedure, speech communication, and opportunities to demonstrate skill proficiency in FFA competition.
5. Provides achievement opportunities in career development events appropriate to instruction and student interest.

6. Encourages academic excellence and pursuit of post-secondary education through promotion of and assistance in applying for FFA scholarships.
7. Provides leadership opportunities above the chapter level through active participation in district, area and state FFA activities.
8. Provides a systematic and consistent avenue for significant and public recognition of student achievement. This should include an annual awards program and a working relationship with local media.
9. Provides input opportunities for parents, industry representatives, administrators and other interested community stakeholders to review and evaluate program operations through an advisory committee which reports findings and recommendations to the board of trustees.
10. Has a well-organized adult support group which assists teachers and students in achieving chapter goals in harmony with school district policies. The local FFA chapter should also draw on the expertise of other subject area instructors to assist in meeting student and chapter goals.
11. Reaches students of all races, ethnicities and socio-economic backgrounds and develops programs that are diverse and inclusive. The chapter membership should reflect the demographic profile of the campus, and if not, the local chapter should be engaged in tactics to reach this standard.



2016-17 State President Jake Traylor of Gilmer and State First Vice President Conner Mckenzie of Stephenville will visit communities and schools across Texas in a Ford F-150. The truck and its special decal design were made possible by the Texas FFA Foundation's corporate partnership with the Ford Motor Company and Texas Ford Dealers.

Section 2 - Student Leadership:

Chapter Officers and Committee Chairs All local chapters should have functioning officers and committee chairs. Each of the components of the National FFA Organization's Quality Standards for Local Chapters should be represented by an active standing committee charged with clear and measurable objectives. Leadership means exerting influence and FFA members should learn to exercise leadership in the context of an organization.

Area and District Officers Student officers are elected to conduct the members' business at each organizational level—district and area. These officers are expected to conduct meetings, camps and workshops and represent their respective associations. All district and area officers must hold the chapter degree at the time of their election.

State Officers It is a remarkable opportunity to serve as a Texas FFA state officer. Ten members are elected to work on behalf of their fellow Texas FFA members in this capacity. Officers are elected via a student-centered process facilitated by board-appointed adult volunteers at the state level that consists of two phases. The first phase includes: personal round-1, written exam (multiple choice and essay), one-on-one interview Round and Advocacy Stand and Deliver Practicum. Following the first phase the top two candidates from each area will remain to participate in phase two which includes: Facilitation Practicum, Round Robin Round and Personal Round 2. At the end of the interview process, two area finalists appear before their respective delegation caucus to deliver a campaign speech and participate in a candidate forum. Delegates cast ballots within their area caucus and the results of this initial vote are combined with exam interview scores to produce a single candidate from each area. Once each final candidate has received their area nomination, he or she will provide a three-minute run off speech to the delegates to seek to be the Texas FFA State President. Officers must hold the Lone Star FFA Degree at the time of the state election held at that year's state convention and must be no more than one year removed from high school graduation. A president and vice president are elected from the ten incoming officers. These two officers take a one-year leave of absence from college studies to serve as the Texas FFA's travel team, visiting three schools a day representing the Texas FFA and delivering motivational workshops to students, teachers, administrators and other interested parties.

National Officers Beginning with Roy Martin of Cotulla, who was the first to serve as a national FFA officer in 1936-37, 29 Texans have served as a member of the six-member national FFA officer team. Bobby Tucker of Mineola was the first of six Texans to serve as national president. Randa Braune of Bellville served as the most recent National Officer from Texas in 2009-2010. Texas' candidate is nominated by a student committee composed of members representing all ten area associations. In addition to those ten members is a single chairperson, which is a member of the immediate past State FFA Officer Team, appointed by the State FFA President with the consent of the Board of Directors. The committee convenes before the annual state convention to examine each candidate using nominating procedures which closely mirror the national selection process. The national officer nomination process is conducted in conjunction with the National FFA convention in Louisville. A nine-member nominating committee interviews all candidates and nominates a president, secretary and vice president from each of the four national regions.

National Convention Delegates Each state FFA association is allotted a number of voting delegates to the National FFA Convention based on membership. Each state FFA Association is allotted a number of voting delegates to the National FFA Convention based on membership. In 2016, 69 of the 475 national delegates are Texans. The state's ten-member officer team serves as part of the delegation and the area associations are given the opportunity to select members to travel to the national convention to represent the interests of the state's members in conducting the National FFA Organization's business. The national delegate process starts long before the national convention.

In Texas, It begins as a grassroots process through which any member has the opportunity to have an issue or idea considered at the national level. One of an area officer's first responsibilities is to gather concerns and issues regarding the National FFA Organization. These are funneled to the state leadership conference in June, at which time a student national issues committee examines all forwarded issues and submits a report to the Texas FFA Board of Directors and to the National FFA Organization. These issues, along with other issues forwarded by other states are considered by the delegates to the National State President's Conference in Washington, D.C. Issues deemed to be most important are selected and become national delegate issues. All national delegates are assigned to issue committees which consider one of the critical issues and hold public hearings. Each committee develops recommendations which are presented to the National FFA Board of Directors.



Texas FFA members have an opportunity to exert influence on a national scale, not only as delegates, but also via a grassroots process through which any member can have an issue submitted and possibly have it debated and discussed by national delegates.

District, Area and State Delegates FFA values a hands-on, "learning to do, doing to learn leadership development philosophy and strategy. To that end, each chapter is entitled to send delegates to the state convention to cast votes in election processes and to participate in the conduct of the state association's business. Student delegates must approve any dues increases, amendments to the constitution or bylaws, regular and honorary state degrees and the state association's nominee for national office. Delegates also approve the annual program of activities and budget.

Each local chapter is entitled to send one delegate from its active membership plus one additional delegate for 50 members or any fraction thereof above the first 50 members. To conduct business, the any delegate body must achieve a quorum, which is defined as the minimum number of members who must be present to legally conduct business. For the state FFA delegation body, a majority of chapters which are registered for convention constitutes a quorum.

Districts and areas should also carry on delegate business sessions. While delegate allocation plans may vary between the districts, each chapter should send delegates to be active participants.

Ford Leadership Scholars In September, 2009, the Texas FFA Board of Directors approved the Ford Leadership Scholars, a cutting-edge leadership development program. An application process begins in January and includes a reading assignment, test, telephone interview and finally a face-to-face behavioral interview. Ten members are selected by a committee of industry professionals to participate in an intense six-month program that includes industry tours, hands-on projects and mentoring by recognized industry leaders.

Section 3 - Leadership Development through Camps, Conferences, Programs and Conventions:

Leadership Conferences Learning doesn't stop when schools close for the summer months. Thousands of Texas FFA members attend chapter, district, area and state leadership conferences held across the state each year. The Texas FFA Association's approach to leadership development is "learning by doing" through peer instruction. Each year, the state's 74 area officers attend the state leadership conference held in early June. State officers organize the conference and provide the instruction with the goal of equipping area officers to conduct area conferences for district and chapter officers. All of the state's ten areas and a number of districts conduct leadership conferences for chapter and/or district officers. Several districts hold chapter officer camps.



The 2016 State Leadership Conference was held at the State Capitol in Austin, June 4-7, 2016

Leadership Development Conferences

In 2013, Texas FFA adopted an overall plan titled the "Leadership Development Continuum," a long-range plan with specific leadership development outcomes for members at different stages of development. To achieve this goal, Texas FFA is developing leadership conference programs for each year of a member's FFA journey. Most greenhand-level conferences are conducted by district and area associations, but Texas FFA provides curricular support for these efforts. In 2015-16, Texas FFA is piloting the sophomore-level conference called "Made for Excellence," which

focuses on personal development through self-discovery of talents, strengths, interests and character to develop in members the capacity for individual achievement.

Day at the Capitol Each year, Texas FFA designates a day in February for Texas FFA members to come to the state capitol to learn about the legislative process. Because the legislature convenes on odd-numbered years, the program alternates between a workshop-style event on interim years (when the legislature is not in session) and session years. The interim-year program features speakers who are statewide elected officials, legislators, legislative and agency staffers and professional legislative advocates. When the legislature is in session, FFA members spend time interacting with their elected senators and representatives.

State Convention The state Convention is the highlight of the year for the Texas FFA Association. Each year, some 11,000 to 12,000 active, collegiate and alumni members, guests and other supporters convene to recognize Texas FFA's degree, award and scholarship recipients, compete for state honors in the talent competition, elect new officers, conduct the business of the state association and hear from inspiring speakers. Texas FFA members can play an active role in convention by representing their chapter as a voting delegate or by serving as a member of the courtesy corps, Texas FFA Foundation Ambassadors, Texas FFA Chorus, or the Convention Media Team. In addition to the events on the main stage, the convention features top entertainment acts, the Texas FFA State Rodeo Finals, leadership development workshops, Collegiate and Alumni FFA conventions and the Texas FFA Alumni Benefit Auction. The state public speaking finals and agriscience fair are held in conjunction with the annual convention. State convention sites are selected by the Texas FFA Association Board of Directors, usually about five years in advance of each convention. In 2016, the 88th Texas FFA Convention was held in Dallas and had an attendance of 11,259. The largest convention on record was the 86th convention held in Fort Worth in 2014 with an attendance of 12,378. In 2017, the 89th Texas FFA Convention will be held in Corpus Christi. In 2018, Texas FFA will begin a three-year convention run: 2018-20 in Fort Worth and 2021-23 in Dallas. This will be the first time to hold consecutive conventions in a single location since 1929-33, when the FFT/FFA held five successive conventions in conjunction with the State Fair of Texas in Dallas.



CHAPTER 6: GETTING INVOLVED—CAREER AND LEADERSHIP DEVELOPMENT

Section 1 - Advanced Degrees and Awards: For the FFA member, degrees of membership represent milestones in the development of leadership, career and citizenship skills. Member and chapter awards provide worthy goals and significant recognition in a competitive environment. The Texas FFA’s awards program reflects the diversity of the agricultural industry and the agriculture, food and natural resources curriculum. Jerome Tymrak of Texas A&M University-Kingsville serves as general superintendent of the state award and degree selection process. A 20-member advisory committee provides input to the Board of Directors concerning policies and procedures regarding award and degree selection.

Degree of Membership and the Degree Check Process The FFA’s four-tiered degree structure—Greenhand, Chapter, State and American Degrees—is as old as the FFA itself. In 1928, four students received the state farmer degree as members of the Future Farmers of Texas: Lacy Baker and H.R. Wright of Dilley and Robert Gardner and Leon King of Denison. Two degrees of membership are bestowed by the local chapter—the Greenhand and Chapter Degrees. The State FFA Degree is known as the Lone Star FFA Degree in Texas. It is the highest degree of membership that can be bestowed by the Texas FFA Association and is awarded annually at the state convention held in July. The American Degree is awarded by the National FFA Organization, but applicants must submit application to the state association for approval and submission to the national level. Degrees are not competitive amongst students and the state has no limit on the number of members who may receive a degree in a given year. If a member meets the constitutional standard, they may receive the degree, provided records and degree application have been completed and submitted in compliance to all deadlines



Mr. Jerome Tymrak serves as the general superintendent of the Texas FFA’s award and degree selection process.

and related state policies. The process of inspecting record books and checking application is called the degree check. The degree check process begins in each of the state's 57 districts and culminates in the state degree check held at a place designated by the state executive director with the advice and consent of the board of directors.

Star Awards Members with an outstanding SAE and record of achievement and leadership have the opportunity to win star awards at each degree level. At the state level, each star award winner receives a \$1,000 Dina Wallrath Robertson Memorial Scholarship. Only American Degree level Stars advance to the national convention. State finalists and winners are recognized at the state convention. Because of the vast differences that exist between different types of SAE endeavors, star award are divided into four divisions:

- Star Farmer (production) entrepreneurial enterprises that are production oriented.
- Star in Agribusiness: agricultural sales and services or other non-production entrepreneurial endeavors. All entrepreneurial horticultural enterprises, such as ornamental plant production and landscaping, are classified as agribusiness even if the SAE is production oriented.
- Star in Placement: employment-based or work-based SAE's.
- Star in Agriscience: programs which are aimed at developing higher order scientific knowledge and skills. Applications in this area may be placement, entrepreneurial or experimental.



In 2015, Texans made history with American Star Finalists in all four categories. Star applicants must meet the degree requirements for the level at which they are applying and the criteria for the award division for which they are applying. State finalists, with the exception of American Degree level applicants, are interviewed at the state level, and in most cases, interviews are also conducted at the district and area levels. The degree application and star battery must be submitted in accordance to established district and area guidelines and to the state level in compliance to deadlines and standards established in the Texas FFA Association's Policy Handbook, Section 26: Selection Procedures for Degree Candidates, Student and Chapter Awards.

Proficiency Awards The National FFA Organization establishes proficiency award areas that reflect the diverse, interdisciplinary nature of the agricultural industry and the scope of possibilities for student SAE's. Proficiency award applications are submitted at the district level with winners advancing to the area level to be considered for area honors. Area winners are submitted to the state selection process and must be rated as a gold emblem application to be considered for top state honors. State winners receive a \$1,000 scholarship and are forwarded to the National FFA Organization to be reviewed for national honors.

John Justin "Standard of the West" Award In 1998, Justin Boot Company began a partnership with the Texas FFA Association by sponsoring the John Justin "Standard of the West" Award. The "Standard of the West" Award is designed to recognize those FFA members who exemplify the spirit of agriculture, along with its work ethic and family values. The selection criteria for the award are based upon the individual's integrity, honesty, helpfulness, perseverance, grades, and school attendance. Each area selects one John Justin "Standard of the West" Award winner who receives a product-gift certificate, a plaque, and a \$500 stipend during the Texas FFA Convention. This individual will also be highlighted in one of the issues of the *Texas FFA News* online. The state winner will receive an additional product-gift certificate and plaque and a \$2,500 stipend. In addition, the advisor(s) of the state winner will receive a pair of full-quill ostrich boots.

Chapter Recognition Texas FFA Association recognizes those chapters that have outstanding programs of activities through the National Chapter Award program. Chapters apply using the national application, submitting the application at the district and area levels. Chapter applications are evaluated and ranked at the state degree and award selection process and rated as gold, silver, or bronze level applicants. Gold-rated applications are forwarded to the National FFA Center in Indianapolis for national level judging. At the national level, applications are rated as three stars, two stars or one star. The nation's top three star chapters are considered for Models of Innovation or Models of Excellence recognition in the three POA divisions: student development, chapter development, and community development. The Golden Horizon Award is a state-level recognition for chapters who participate in a variety of activities and programs above

the chapter level. Points are earned for each activity in which the chapter engages. Chapters are divided into two divisions—multiple-teacher departments and single teacher departments. Applications are divided into gold, silver and bronze rating categories based on scores. Gold-rated applicants are recognized at the state FFA convention.



Dr. Rudy Ritz of Texas Tech University is superintendent of the Texas Agriscience Fair.

Section 2 - Agriscience Fair: Since 1998, the Texas FFA Agriscience Fair has provided students opportunity to apply scientific method to conduct agricultural research projects and to present their results in an abstract, research paper, display and interview at the state competition held in conjunction with the state convention in July. Students compete as individuals or as a part of a two-member team and are divided into two age divisions—junior for seventh, eighth and ninth grade students and the senior division for students in grades 10, 11 and 12. The agriscience fair recognizes six disciplines of research: animal systems, environmental services/natural resource systems, food products and processing systems, plant systems, power, structural, and technical systems, and social systems. Winning projects advance to the national judging in Indianapolis in July. Projects selected as national finalists compete in the Agriscience Fair held in conjunction with the National FFA Convention and receive a \$1,000 scholarship supported by Dick Wallrath and Champion Ranch through the Texas FFA Foundation. Dr. Rudy Ritz of Texas Tech University is the state superintendent of the Texas Agriscience Fair.



Section 3 - Leadership Development Events (State Finals – December 2-3, 2016): Leadership Development Events focus on creating situations for members to demonstrate their abilities in public speaking, decision making, communication and their knowledge of agriculture and the FFA organization. Team and individual events are used to reinforce what is taught in Agriculture, Food and Natural Resources classrooms.

The forerunner of today's LDE's was an invitational event hosted by the Vocational Agriculture Club of Sam Houston State Teachers College (now Sam Houston State University). This invitational was two events: public speaking, won by C. T. Heath of Henderson and debating, won by the Willis Chapter. These events have been held continuously by SHSU since then, with the exception of a six-year interruption created by World War II.



Dr. Doug Ullrich and Dr. Dwayne Pavelock, SHSU-Huntsville, co-chair the state Leadership Development Event Committee and together share responsibilities as general superintendent of the Texas FFA's Leadership Development Events.

All LDE's have elimination rounds at district and area levels that culminate in the state competition hosted by Sam Houston State University in Huntsville. District and area level competitions are calendared and coordinated by the teacher leadership at these respective levels. Dr. Doug Ullrich and Dr. Dwayne Pavelock chair the LDE Advisory Committee that makes policy and rule recommendations to the Texas FFA Association Board of Directors.

- **Agricultural Advocacy** A team of three to five members create and present a five to eight minute presentation designed to foster awareness and support of American agriculture. The presentation follows a theme adopted annually by the Leadership Development Event Advisory Committee. A five-minute question-answer period follows the presentation.
- **Agricultural Issues Forum** A team of three to seven students research and analyze a current agricultural issue, create a portfolio and also develop and deliver a presentation that stresses both pros and cons of their selected agricultural issue. At the event competition, members use verbal skills and

presentation abilities to defend their findings and answer judges' questions. The state winner advances to national competition held in late October at the National FFA Convention.

- **Agricultural Skill Demonstration** A team of three to five members performs an actual demonstration of an agricultural skill including anything in the Agriculture, Food and Natural Resources curriculum using effective public speaking and communication methods. There is both a Greenhand and senior level for this event.
- **Chapter Agricultural Quiz** Competitors are tested on their knowledge of materials from Gray's Parliamentary Guide for FFA, the latest FFA Official Manual and information from the Texas FFA Leadership Guide, U.S. and Texas Farm Facts and current agricultural issues and events on a 150-question exam. Students compete for both individual and team honors. Quiz teams may be comprised of three or four members.
- **Chapter Conducting** Teams conduct a mock chapter meeting to demonstrate knowledge of basic parliamentary law and the use of correct parliamentary procedures. At the conclusion of the meeting, team members are asked questions regarding parliamentary law. There is both a greenhand and senior level for this event. The senior division winner is certified for national parliamentary procedure career development event.
- **Creed Speaking** A member presents the FFA Creed from memory and answers questions about its meaning and purpose. This event is just one way to boost self-confidence, earn recognition, and develop powerful, organized and professional communication skills. There is both a greenhand and senior level for this event. The greenhand division winner qualifies for the national FFA competition. Greenhand competitors must be in the seventh, eighth, or ninth grade.
- **FFA Broadcasting** A team of three members presents an informative radio program covering one or more agricultural subjects that is current in nature and local in content. The contest assumes that the chapter has a regularly scheduled non-commercial radio program once each month over a local station.
- **Greenhand FFA Quiz** For greenhand members, the FFA Quiz is a 100-point exam testing knowledge of the Gray's Guide to Parliamentary Procedure for FFA, the latest FFA Official Manual and the Texas FFA District Officer Candidate Study Guide.
- **Job Interview** Participants submit their cover letter and resume, complete a job application for an agricultural position on site and participate in an interview via telephone, in-person one-on-one and with a panel of possible employers. The state winner advances to the national event.
- **Public Relations** A team of between two and four FFA members develops and presents a 5-8 minute program to inform a student group regarding the Texas FFA and what it represents. Team members are asked questions in response to their program following the presentation. The specific target audience for the presentation changes each year and is identified in the event rules.

Section 4 - Career Development Events (State finals in spring, 2016): Career Development Events build on what is learned in agricultural classes and encourage members to put their knowledge into practice. The events are designed to help a member prepare for a career in agriculture by testing and challenging the student's technical, leadership, interpersonal and teamwork skills as well as their knowledge of the subject matter.



Mrs. Melissa Loerwald of Florence heads the state's CDE Advisory Committee

These events, originally called judging contests, pre-date the FFA. The first known Texas competition was a livestock judging contest was hosted in April, 1920 at an event call "Smith-Hughes Day" at the Agricultural and Mechanical College of Texas (Texas A&M). Bellville won that first contest.

Most Texas FFA CDE's are conducted in a partnership with the Agricultural Consortium of Texas, an association of college and universities with instructional and research programs in Agriculture, Food and Natural Resources. This relationship is defined in a memorandum of understanding that is part of the Texas FFA Association's board-adopted policies. A nearly identical relationship exists with the Wildlife Alliance for Youth, the Texas FFA's provider for the Wildlife and Recreation Management CDE. A teacher committee comprised of representatives from each of the ten areas convenes annually to review policies and procedures and

to make recommendations to the Texas FFA Board of Directors. Melissa Loerwald of Florence chairs the state CDE advisory committee, serving a five-year term that will expire in August of 2021. She is the first female CDE chairman in Texas FFA history.

Because of the diverse and varied nature of the CDE's seven different sites are used to host 28 different state events: Houston Livestock Show, Sam Houston State University, Huntsville; Stephen F. Austin State University, Nacogdoches; Tarleton State University, Stephenville; Texas A&M University, College Station and Texas Tech University, Lubbock. The site of the wildlife and recreation management event is rotated amongst the state's five biological regions. The state event will be hosted on April 25, 2017 by Region I at a site to be announced in the spring.

- **Agricultural Communications** Teams consisting of three members participate in a simulated news conference, then use the information collected to complete practical problems including: writing a news story and press release, preparing a website blog and developing a graphic design. Participants also complete a written communications quiz and an editing exercise. State event location: Texas Tech University. State winning team advances to national competition that is held during the National FFA Convention in late October.
- **Agricultural Technology & Mechanical Systems** This event tests both technical and agricultural mechanics skills. A team of three or four members must demonstrate their ability to work with others while solving problems. During the event, members complete a written exam and demonstrate problem-solving and hands-on performance skills. The event takes a "systems" approach and emphasizes machinery and equipment systems, related industry and marketing systems, energy systems, structural systems and environmental/natural resource systems. State event location: Sam Houston State University. State winning team advances to national competition that is held in late October during the National FFA Convention.
- **Agricultural Sales** The professional sales process is demonstrated by teams of three or four members, including customer relations, advertising and promotion, telephone skills and product display. At the competition, members complete an exam, present a project summary and make a sales presentation for an agricultural product. They also complete one of four practical problems and cooperatively solve a market analysis problem. State event location: Sam Houston State University. State winning team advances to national competition that is held in late October during the National FFA Convention.
- **Agronomy** Participants complete a 50-question written exam; identify seeds, insects, soils and crops; demonstrate knowledge of agronomic management and solve a practical problem. Teams consist of three or four members. State event location: Texas Tech University. State winning team advances to national competition that is held in late October during the National FFA Convention.
- **Cotton Classing** Team members evaluate 50 cotton samples and class each sample as to color grade and leaf grade. State event location: Texas Tech University
- **Dairy Cattle Evaluation** At the competition, members complete a written exam, evaluate dairy cattle on physical characteristics and analyze cows based on pedigree and herd record. Teams consist of three or four members. State event location: Tarleton State University. State winning team advances to national competition that is held during the National FFA Convention in late October.
- **Entomology** Students apply the fundamentals of entomology and develop skills in identifying common insects and their significance to people and agriculture. State event location: Texas Tech University.
- **Environmental and Natural Resources** The event is designed to assess knowledge and skills related to environmental assessment including water analysis for contaminants including pH, temperature, dissolved oxygen, nitrates and phosphorus, identifying pollutant sources and improvement tactics, applying GPS skills in identifying longitude and latitude of a given set of points, identifying boundaries, laying out fence lines, ponds, drainage structures and other related facilities, analyzing soil structures and conditions, identifying equipment, plants, wildlife, fish, reptiles, amphibians, predators, birds and non-native species and addressing global environmental issues. State event location: Tarleton State. The state-winning team will be certified to compete in the national Environmental and Natural Resources CDE held in Indianapolis in October.
- **Farm Business Management** Management skills and economic principles are applied to agriculture and agribusiness situations as team members complete a written exam and solve farm analysis

problems. State event location: Sam Houston State University. State winning team advances to national competition that is held during the National FFA Convention in late October.

- **Floriculture** Classroom knowledge and skills are applied as students identify and evaluate cut flowers, house plants, flowering plants, floral designs and complete an exam that tests their knowledge of floral design, propagation as well as preparation of floral and foliage products for sale. State event location: Sam Houston State University. State winning team advances to national competition that is held during the National FFA Convention in late October.
- **Food Science and Technology** A four-member team designs a new food product or re-designs an existing one using a marketing scenario, as they covers product development and presentation, along with food safety issues. Participants use their sensory skills to evaluate and solve problems while applying sound principles in a decision making process. State event location: Texas Tech University. State winning team advances to national competition that is held during the National FFA Convention in late October.
- **Forage Evaluation** Students apply their knowledge of various forage species to evaluate hay based on physical properties, identify species common to pastures and complete quiz that tests team members' knowledge of different aspects of forages. Teams consist of three or four members. State event location: Sam Houston State University.
- **Forestry** Along with identification of both hardwood and pine species, team members evaluate sites for best management practices based on environmental factors, analyze plots for future production, product volume and identify plant species and their effects on timber-forage-wildlife relationships. State event location: Stephen F. Austin University Experimental Forest. Event held by: Natural Resource Conservation Service. The state winning team advances to national competition that is held during the National FFA Convention the end of October. In addition, the top three teams are certified for a multi-state competition held in May.
- **Homesite Evaluation** This event is designed to emphasize the importance of soils and their limitations for homesites. The importance of a soil's suitability for parks, playgrounds, roads, streets, and other uses can also be considered. Many of the properties important for agricultural uses are also important for urban uses. Individual families and communities can avoid construction and maintenance problems if a study of soil conditions is made prior to construction. The soil information is used to predict potential problems associated with planned or existing homesites. Although many of the properties are the same as judging soil for agricultural use, a different set of criteria is used. Teams consist of 3 or 4 members. State event location: Tarleton State University. State winning team advances to national competition in Oklahoma in May.
- **Horse Evaluation** This CDE allows members to observe and evaluate in order to rank horses based on breed characteristics and conformation. Performance classes are also evaluated within various equestrian styles. American Quarter Horse standards are used in performance classes. State event location: Texas Tech University. State winning team advances to national competition that is held in late October during the National FFA Convention.
- **Land Evaluation** Members of land evaluation teams judge sites based on characteristics of the soil and observations of landscape conditions, then recommend land treatments considering factors such as soil characteristics, vegetative conditions and planned use for the site. State event location: Tarleton State University. The state's top five teams advance to the national competition held at Oklahoma City in early May.
- **Livestock Evaluation** Beef cattle, sheep and swine are evaluated for market values and desirable physical traits. Team members also rank livestock for breeding purposes, using observed physical characteristics and performance data. State event location: Texas A&M University. State winning team advances to national competition that is held in late October during the National FFA Convention. Second and third place teams have the option to compete in the National Western competition in Denver, CO or the American Royal in Kansas City, MO.
- **Marketing Plan** A team of three members apply practical skills in the marketing process by developing and presenting a marketing plan. The plan promotes a current or proposed agricultural product, supply or service. In competition, the team presents its plan and answers judges' questions.

State event location: Sam Houston State University. The state-winning team advances to national competition that is held in late October during the National FFA Convention.

- **Meats Evaluation** Students develop skills for careers in the meat animal industry as they complete a written exam; evaluate beef carcasses for quality and yield grade; identify various meat cuts and place carcasses, wholesale and/or retail cuts. State event location: Texas A&M University State winning team advances to national competition that is held in late October during the National FFA Convention. State runner-up has the option of competing at the National Western competition in Denver, CO.
- **Milk Quality** Members develop a greater understanding of quality production, processing, distribution, promotion, marketing and consumption of dairy products. Team members complete a written exam, evaluate milk samples, identify cheeses and distinguish real and artificial dairy foods. State event location: Tarleton State University. State winning team advances to national competition that is held during the National FFA Convention in late October.
- **Nursery/Landscape** This CDE encourages members to apply their landscaping, marketing and service skills as they complete a written exam, identify various landscaping plant materials and evaluate plant materials and landscape plans. State event location: Sam Houston State University. State winning team advances to national competition that is held in late October during the National FFA Convention.
- **Poultry Evaluation** Students apply classroom knowledge to evaluate production, processing, marketing and consumption of chickens, turkeys, processed products and eggs. Participants complete a written exam, solve a management problem, evaluate poultry birds and products, as well as identify various poultry products. State winning team advances to national competition that is held in late October during the National FFA Convention. State event location: Texas A&M University.
- **Range** The competition requires members to record the degree of utilization, kind of site, range condition and the predominant decreaser, increaser, and invader plant species while also recommending range management practices. The top five teams are certified for the national competition held near Oklahoma City in early May. State event location: Tarleton State University
- **Plant Identification** Contestants identify samples of grasses, forbs, legumes, and woody plants and for each indicate length of life, season of growth, origin, and the economic values of the species on wildlife and grazing. State event location: Texas Tech University.
- **Tractor Technician** In this three part competition, team members appraise components and parts of tractors and agricultural implements and make recommendations for services needed and not needed, complete a written exam and finally the team of three members, working as a group, compete in locating and correcting five deliberately placed malfunctions in diesel fueled tractors and safely navigate the repaired tractor through a driving course within the 25-minute time limit. State event location: Houston Livestock Show and Rodeo.
- **Veterinary Science** The purpose of this event is to promote college and career readiness by providing opportunities to develop technical knowledge and demonstrate practical skills in the field of veterinary science. Participants will demonstrate technical competency with small and large animals in the following areas: anatomy and physiology, clinical procedures, identification, health and safety, medical terminology, and veterinary math applications. State Event Location: Texas A&M University.
- **Wildlife and Recreation Management** Students apply the information gained through enrollment in the Agriculture, Food and Natural Resources wildlife management course to demonstrate and identify plant species, proper habitat management practices, safety procedures, game laws, management techniques as well as compass and pacing skills. Event site is rotated amongst the five biological regions of the state. The spring 2017 event will be hosted by Region I.
- **Wool** Members within a team each evaluate fleeces for fineness, length and yield, rank fleeces within a group and give reasons for their placing of those classes. Contestants must be very familiar with all grading standards and evaluation techniques because no measuring devices are to be used during the contest. State event location: Texas Tech University. State winner and runner-up are eligible to compete in a national wool event held in Sonora, Texas in June.

Section 5 - Speaking Development Events (State finals in summer, 2017): Speaking Development Events are designed to develop the ability of all FFA members to express themselves on a given subject. Students are encouraged to develop their communication skills and learn to formulate their remarks for presentation in a variety of situations.

The first official FFA speaking contest was hosted by Texas A&M University on April 20, 1931, with 12 contestants. Smith Reed of Holland won that first competition with his speech entitled, “Farm Machinery and the Agricultural Revolution.”

The state semi-finals and finals of the speaking development events are held in conjunction with the Texas FFA convention.

- **Extemporaneous Public Speaking** Members learn how to think on their feet and make a case quickly and persuasively. Contestants are given 30 minutes to prepare a speech on one of three randomly selected agricultural topics. After delivering the speech, contestants are asked questions about their speech and topic. State winner advances to National competition that is held during the National FFA Convention the end of October. Dr. Kevin Williams of West Texas A&M University chairs this event.
- **Senior Prepared Public Speaking** Each contestant writes and delivers a six to eight minute speech about a current agricultural subject of their choice. Contestants enter in one of six subject divisions based on speech content: animal science, plant science, natural resources, agribusiness, agricultural policy and agriscience. Participants are then scored based on the written speech, speech delivery and their answers to judges’ questions. Participants advance from district to area to state in their respective division. Six division champions are chosen in the semifinal round at the state FFA convention in July and an overall champion is selected in the final round. The overall state winner advances to national competition that is held during the National FFA Convention in late October. Dr. Leslie Vann, Superintendent of Schools, Comfort ISD, chairs this event.
- **Junior Prepared Public Speaking** Each contestant writes and delivers a five to seven minute speech about a current agricultural subject of their choice. Participants are evaluated and scored based on the written speech, speech delivery and their answers to judges’ questions. Participants must be in 7th, 8th or 9th grade. Ms. Laura Moss of Stephenville chairs this event.
- **Soil Stewardship Prepared Public Speaking** Contestants write and deliver a six to eight minute speech in accordance with the year’s theme selected by the Texas State Soil and Water Conservation Board. Prior to competition the speech must be presented to the local chapter and to at least one civic or school group if competing above the district level. Themes and other materials are made available through the Texas FFA Association’s website. The state winner receives a \$3,000 scholarship, the runner up wins a \$2,000 scholarship and the third place winner receives a \$1000 scholarship. All scholarships are sponsored by the Association of Texas Soil and Water Conservation Districts. Clyde Gottschalk of the Texas State Soil and Water Conservation Board chairs this event.



35 Texas FFA members received a \$10,000 scholarship from the Richard Wallrath Educational Foundation at the 88th Annual Texas FFA Convention in Dallas

Section 6 - Texas FFA Scholarship Program: One of the Texas FFA Association’s strategic priorities is academic excellence. One of the fulfillments of this priority is availability of scholarships for students to pursue advanced studies at colleges, universities and technical schools following high school graduation. The Texas FFA Association awards two types of scholarships—academic and award.

Award Scholarships Award scholarships are given in connection with one of the FFA’s recognition programs. Scholarship recipients are identified through the selection process of that particular awards program. Currently scholarships are award through the following recognition programs: agriscience fair, star awards, proficiency awards, work-based learning awards, agricultural industry awards, speaking development events and the Texas FFA Rodeo.

Academic Scholarships Texas FFA Association is blessed with partners who underwrite nearly \$2 million in scholarships through the Texas FFA Association’s academic scholarship program. The purpose

of the Texas FFA College Scholarship Program is to provide financial assistance to the most capable and deserving FFA members from each area of the state wishing to pursue a bachelor's degree from a Texas college or university. Scholarship recipients must pursue a degree plan which meets the criteria of their scholarship award. Candidates are selected on a competitive basis applying the following criteria: unweighted grade average, SAT or ACT scores, Agriculture, Food and Natural Resources and related instruction, LDE, CDE and other FFA participation, FFA leadership, SAE, financial need, and interview performance. Brent Lankford of Ponder is the chairman.

Academic Scholarship Selection Preliminary Rounds Each area conducts an elimination process, and each area is allowed to submit a number of state qualifiers. A scholarship evaluation committee selects scholarship finalists from this pool of state qualifiers. Finalists are interviewed at the state scholarship selection meeting held in conjunction with the award and degree selection conference in early June.

Academic Scholarship Program Eligibility To be eligible to apply for a Texas FFA College Scholarship, an applicant must:

- be an active member of the Texas FFA Association for the current year and at least two of the three previous years, be listed on the state FFA roster, and be in good standing with the Texas FFA Association and all Texas FFA scholarship sponsors.
- be a U.S. citizen. If the applicant's transcript reflects a place of birth other than the United States, proof of naturalization must be shown to a high school records official (principal, counselor, registrar, etc.) or the Agriculture, Food and Natural Resources teacher, who will then verify it as part of the application.
- be a current year graduating senior.
- declare intent to attend a Texas college or university in the following fall semester.
- upon graduation, have completed at least three academic calendar years and at least five different semesters of instruction in agriculture, food and natural resources during grades 9 through 12. Course credits received through credit by examination shall not count towards satisfying the five different semesters of instruction. All agriculture, food and natural resources courses taken in one semester shall be counted as one semester of instruction.
- score at least 1350 on the SAT (1000 on the new SAT) or at least nineteen 19 on the ACT.
- be in the upper one-half of his/her class, based on scholastic rank, for the first three and one-half years of high school for all scholarships, except the Houston Livestock Show and Rodeo, Wallrath Educational Organization and Star of Texas Scholarships, which require that the student be in the upper one-fourth.
- be present in *Official FFA Dress* (according to the *Official FFA Manual*) at all scholarship interviews (district, area, and state).
- submit the most current Texas FFA scholarship application.
- All recipients are required to be present at the state FFA convention to receive their scholarships.

Ryan Mott Memorial Scholarship This scholarship is an academic/leadership scholarship selected outside of the regular academic scholarship program and memorializes Ryan Mott, 1997-98 State Vice President from Area IV, and the Quanah FFA chapter, who passed away shortly after his term of officer following a valiant battle with cancer. Applicants complete a separate application, and each area select one finalist to interview at the state degree, award and scholarship selection process. The winner receives a \$1,000 scholarship administered by the Texas FFA Foundation. A member may not be a finalist for the Ryan Mott Memorial Scholarship and for the regular academic scholarship program.



Brent Lankford of Ponder serves as the Chairman of the State Scholarship Committee

**TEXAS FFA ASSOCIATION
CONSTITUTION**

ARTICLE I. NAME

The name of the organization shall be the Texas FFA Association, hereinafter referred to as the Texas FFA Association/Texas Association of Future Farmers of America. Recognized units of the Association may officially use the letters "FFA" and/or the words "Future Farmers of America" to designate the Association, its units and/or members.

ARTICLE II. OBJECTIVES OF THE ASSOCIATION

The objectives of the Association hereinafter referred to as the organization shall be consistent with Section 3 of the National FFA Organization's federal charter, Public Law 105-225 (formerly Public Law 81-740). The Association shall cooperate with national and state government agencies and officials for career and technical education in accomplishing the objectives as set forth in Article II of the National FFA Constitution.

ARTICLE III. ORGANIZATION

Section A. The Texas FFA Association/Texas Association of Future Farmers of America is the organization of, by, and for students enrolled in Agriculture, Food and Natural Resources programs and pursuant to the Texas Education Code Section 29.182, is an integral part of the agricultural, food, and natural resources career and technical education program. It shall consist of local chapters chartered by the Texas FFA Association. More than one chapter may be chartered in a school when deemed appropriate by the State FFA Board of Directors.

Section B. Active chapters of the Texas FFA Association/Texas Association of Future Farmers of America shall be chartered only in such schools where recognized systematic instruction in Agriculture, Food and Natural Resources is offered under the provisions of the Texas State Plan for Career and Technology Education and the policies of the Texas Education Agency. All chapters, whether they be affiliated with public, charter or private schools must adhere to provisions of the Texas Education Code and Texas Administrative Code related to eligibility for extracurricular or co-curricular participation. Schools with large enrollments and/or multiple programs in Agriculture, Food and Natural Resources may establish subsidiary chapters of the parent chapter. Each subsidiary chapter shall be organized and operated in accordance with all provisions of the national, state, and local constitutions. Subsidiary chapters shall be coordinated by the officers and advisors of the parent chapter.

Section C. Collegiate chapters may be chartered by the Texas FFA Association/Texas Association of Future Farmers of America in two- or four-year colleges and universities where agricultural courses are taught. Membership shall be open to students enrolled in agricultural courses, or those pursuing career objectives in the industry of agriculture or who have an interest in the future welfare of the agricultural industry. Each chartered collegiate FFA chapter may adopt a constitution which shall not conflict with that of the National FFA Organization or the Texas FFA Association/Texas Association of Future Farmers of America, elect officers, and establish a Program of Activities. Activities of collegiate FFA chapter members shall be based upon the needs and interests of its members and in harmony with the purposes, principles, and ideals of the FFA organization. Collegiate chapter members shall pay State and National FFA dues, but under no condition will collegiate dues equal or replace active membership dues for FFA degrees and awards.

ARTICLE IV. PROCEDURES FOR DETERMINING STANDING OF CHAPTERS

Section A. A chapter shall be in good standing with the Texas FFA Association/Texas Association of Future Farmers of America when the following conditions are met:

- (1) All annual District, Area, State, and National dues have been paid to the Texas FFA by November 1 for Fall semester and March 1 for Spring Semester. The Texas FFA membership year runs from September 1 to August 31.
- (2) All reports have been submitted as requested by the Texas FFA Association/Texas Association of Future Farmers of America.
- (3) Provisions of the chapter constitution do not conflict with the Texas or National FFA Constitution and chapter activities are in harmony with the ideals and purposes of the Texas FFA Association/Texas Association of Future Farmers of America and the National FFA Organization.

Section B. Any chapter not meeting the requirements for good standing shall be suspended and reinstated in the following manner:

- (1) The Executive Board of the Texas FFA Association/Texas Association of Future Farmers of America shall warn local chapters on receipt of evidence of a violation to the State or National FFA Constitution and/or Bylaws, and shall have the power to suspend charters of chapters warned when violations are not corrected. (Non-payment of FFA dues and failure to submit a chapter program of activities on request are examples of violations to the State and National Constitution and/or Bylaws.)
- (2) A report of all suspensions shall be presented to the delegates at the next succeeding state convention. In the event a chapter is not in good standing with the Texas FFA Association/Texas Association of Future Farmers of America at the time of the opening of a state convention, the delegates in session at the state convention shall have the power, upon recommendation of the State FFA Board of Directors, to withdraw the charter and refuse such chapter official representation at the State convention. When such action is taken, the chapter in question and members thereof shall be denied the privileges of membership in the Texas FFA Association/Texas Association of Future Farmers of America. Upon meeting the requirements of good standing, a chapter may be reinstated by action of the Texas FFA Association/Texas Association of Future Farmers of America Board of Directors.
- (3) In the event a chapter is to be suspended, the State FFA Executive Director will notify the superintendent and the local advisor of the school where the chapter is located, explaining the action taken and corrective measures the chapter must adopt for the charter to be reinstated.
- (4) In the event a local department of Agriculture, Food and Natural Resources is discontinued, its chartered FFA chapter may officially operate for a period not to exceed three years (36 months) from the date of discontinuance, provided proper supervision is given by a person having the approval of the local school administrator and the State FFA Executive Director. The chapter's charter must be surrendered to the State FFA Executive Director at the end of the three-year period if a local department of Agriculture, Food and Natural Resources is not in operation.

ARTICLE V. MEMBERSHIP

Section A. Membership in this organization shall be of five kinds: (1) Junior, (2) Active, (3) Alumni, (4) Collegiate, and (5) Honorary.

Section B. Junior Membership -- Active chapters of the Texas FFA Association/Texas Association of Future Farmers of America may form Junior FFA Chapters for the purpose of enhancing and encouraging the education of younger students who are interested in the agricultural industry.

- (1) Membership in the Texas Junior FFA organization shall consist of students enrolled in public schools or accredited private schools who are in the third grade and eight years old and may continue until they become eligible to enroll in the Agriculture, Food and Natural Resources program.
- (2) Junior members must be affiliated with a chapter in the school district in which they are enrolled or with a duly chartered chapter in an accredited private school in which they are enrolled as a full-time student unless the school district approves a waiver for out-of-district students. School superintendents must approve and certify in writing out of district students to participate in the junior FFA program(s) of their district. Such waivers must be submitted annually.
- (3) Each Junior FFA Chapter shall submit yearly a roster to the State FFA Association that includes the name, date of birth, age, grade, and address. Each local chapter can set and collect dues. State dues in the same amount as active FFA membership dues shall be collected.

Section C. Active Membership: To be eligible for active membership in a chartered FFA chapter, a student must be enrolled in a secondary Agriculture, Food and Natural Resources program. The Texas FFA Association/Texas Association of Future Farmers of America considers "secondary Agriculture, Food and Natural Resources programs" to be grades 7-12. To retain membership, a student must:

- (1) Be enrolled in a least one Agriculture, Food and Natural Resources course during the school year and/or follow a planned course of study; either course must include a supervised agricultural experience program, the objective of which is to gain experience in agriculture related careers.
- (2) Show an interest in the affairs of the Association by attending meetings, striving for degrees of membership, and participating in other organized activities of the chapter.
- (3) Pay all current District, Area, State and National dues by the date determined by the chapter.

- (4) Display conduct consistent with the ideals and purposes of the Texas FFA Association/Texas Association of Future Farmers of America.

A member may retain active membership until November 30 following the fourth National FFA Convention after graduation from high school. A member who is in good standing at the time of induction into the armed forces of the United States of America or the FFA international program shall be in good standing during that period of time without further payment of dues or attendance at meetings. Time spent in the armed forces or FFA international program shall not be considered as elapsed time in determining the maximum period of four conventions following graduation from high school or leaving high school. Members making use of this waiver of time for the purpose of maintaining active membership for application for advanced degrees must resume active participation within six months after completing their FFA international program or armed service duty, indicating such a desire by payment of dues and attendance at meetings. Members participating in a six-month armed services program or participating in the FFA international program for six months shall be eligible for one full year of extended membership. No individual may retain active membership beyond his or her twenty-third birthday.

Section D. Alumni membership: Membership may be open to former active members, collegiate and honorary members, present and former professional agricultural educators, parents of FFA members, and others interested in and supportive of the FFA.

Section E. Collegiate Membership: Collegiate membership shall be open to students who are enrolled in agricultural courses or who are pursuing career objectives in the industry of agriculture at a two- or four-year college or university having a Collegiate FFA chapter.

Section F. Honorary Membership: Those interested in production agriculture or agribusiness, school superintendents, principals, members of boards of education, chapter advisors, teachers, staff members in Agriculture, Food and Natural Resources, business people, and others who are helping to advance agricultural education and the FFA and who have rendered outstanding service, may be elected to honorary membership by a majority vote of the members present at any regular meeting or convention. Honorary membership shall be limited to the Honorary Chapter FFA Degree/Chapter Farmer Degree in the chapter, Honorary State FFA Degree/Lone Star Farmer Degree in the state association, and the Honorary American FFA Degree in the National Organization.

ARTICLE VI. DEGREES AND PRIVILEGES OF ACTIVE MEMBERSHIP

Section A. There shall be five degrees of active membership based on individual achievement. These are the Discovery FFA Degree, Greenhand FFA Degree/Greenhand Degree, the Chapter FFA Degree/Chapter Farmer Degree, the State FFA Degree/Lone Star Farmer Degree, and the American FFA Degree. The Discovery FFA Degree is intended for use in local chapters where middle school membership is offered in local credit classes. Receipt of this degree is not necessary in order to obtain the Greenhand FFA Degree or subsequent degrees.

Section B. Discovery FFA Degree – To be eligible to receive the Discovery FFA Degree from a chapter, the member must meet the following minimum requirements:

- (1) Be enrolled in agricultural education class for at least a portion of the school year while in grades 7-8.
- (2) Have become a dues paying member of the FFA at local, state and national levels.
- (3) Participate in at least one local FFA chapter activity outside of scheduled class time.
- (4) Have knowledge of agriculturally related career, ownership and entrepreneurial opportunities.
- (5) Be familiar with the local FFA chapter program of activities.
- (6) Submit written applications for the degree.

Section C. Greenhand FFA Degree/Greenhand Degree -- To be eligible to receive the Greenhand FFA Degree from the chapter, the member must meet the following minimum qualifications:

- (1) Must be enrolled in Agriculture, Food and Natural Resources and have satisfactory plans for a supervised agricultural experience program.
- (2) Have learned and explained the FFA Creed, Motto and Salute.
- (3) Have described and explained the meaning of the FFA emblem and colors.
- (4) Have demonstrated a knowledge of the FFA Code of Ethics and the proper use of the FFA jacket.
- (5) Have demonstrated a knowledge of the history of the Organization, the chapter constitution and bylaws, and the chapter Program of Activities.

- (6) Have access to or personally own a copy of the Official FFA Manual and the FFA Student Handbook.
- (7) Have submitted an application for the Greenhand FFA Degree.

Section D. Chapter FFA Degree/Chapter Farmer Degree: To be eligible to receive the Chapter FFA Degree from the chapter, the member must meet the following minimum qualifications:

- (1) Must have received the Greenhand FFA Degree.
- (2) Have satisfactorily completed the equivalent of at least two semesters of systematic school instruction in Agriculture, Food and Natural Resources at or above the ninth grade level, have in operation an approved supervised agricultural experience program, and be enrolled in an Agriculture, Food and Natural Resources course.
- (3) Have participated in the planning and conducting of at least three official functions in the chapter Program of Activities.
- (4) Have earned and productively invested at least \$150 or worked at least forty-five hours in excess of scheduled class time, or a combination thereof and have developed plans for continued growth and improvement in a supervised agricultural experience program. The combination of hours multiplied by a factor of 3.33 and dollars must equal or exceed the number 150.
- (5) Have effectively led a group discussion for fifteen minutes.
- (6) Have demonstrated five procedures of parliamentary law.
- (7) Have shown progress toward individual achievement in the FFA awards program.
- (8) Have a satisfactory scholastic record.
- (9) Have participated in at least 10 hours of community service activities. These hours are in addition to and cannot be duplicated as paid or unpaid labor.
- (10) Have submitted an application for the Chapter FFA Degree.

Section E. State FFA Degree/Lone Star Farmer Degree: To be eligible for the State FFA Degree from the State Association, the member must meet the following minimum qualifications:

- (1) Have received the Chapter FFA Degree.
- (2) Have been an active FFA member for at least two years (24 months) at the time of receiving the State FFA Degree.
- (3) Have satisfactorily completed the equivalent of at least four semesters of systematic school instruction in Agriculture, Food and Natural Resources at or above the ninth grade level, which includes a supervised agricultural experience program.
- (4) Have earned and productively invested at least \$1,000 or worked at least 300 hours in excess of scheduled class time, or a combination thereof in a supervised agricultural experience program. The combination of hours, multiplied by a factor of 3.33 and dollars must exceed or equal the number 1000.
- (5) Have demonstrated leadership ability by:
 - (a) Performing ten procedures of parliamentary law.
 - (b) Giving a six-minute speech on a topic relating to agriculture or the FFA.
 - (c) Serving as an officer, committee chairperson, or participating member of a major committee
- (6) Have a satisfactory scholastic record as certified by the local Agriculture, Food and Natural Resources instructor and the principal or superintendent.
- (7) Have participated in the planning and completion of the chapter program of activities.
- (8) As of April 1, have completed ten activities above the chapter level in at least three of six different categories: leadership development events, career development events, conventions and meetings, project shows, student awards and leadership and service as described in policies adopted by the Board of Directors.
- (9) As of April 1 of the year the member is to receive the degree, have participated in at least 25 hours of community service within at least two different community service activities. These hours are in addition to and cannot be duplicated as paid or unpaid SAE hours.

Written records of achievement of all requirements, verified by the chapter FFA advisor, shall be submitted to the State Association at least one month prior to the state FFA convention at which the State FFA Degree is to be received. The State FFA Executive Director shall provide for a review of the records and submit a recommendation to the State FFA Board of Directors, which shall nominate at the State FFA convention the

candidates who have been found worth to receive the honor. The State FFA Degree will be conferred upon the candidate subject to approval by the delegates at the state convention.

Section F. American FFA Degree: To be eligible to receive the American FFA Degree from the National FFA organization, the members must meet the following minimum qualifications:

- (1) Have received the State FFA Degree, have been an active member for the past three years (36 months), and have a record or satisfactory participation in the activities on the chapter and state levels.
- (2) Have satisfactorily completed the equivalent of at least three years (540 hours) of systematic secondary school instruction in an Agriculture, Food and Natural Resources program or have completed the program of Agriculture, Food and Natural Resources at the school last attended.
- (3) Have graduated from high school at least twelve months prior to the national convention at which the degree is to be granted.
- (4) Have in operation and have maintained records to substantiate an outstanding supervised agricultural experience program through which a member has exhibited comprehensive planning, managerial and financial expertise.
- (5) A student, after entering agricultural education must have
 - (a) earned and at least \$10,000 and productively invested at least \$7,500; or
 - (b) earned and productively invested \$2,000 and worked at least 2250 hours in excess of scheduled class time. Any combination of hours x \$3.56 plus dollars must be equal to or greater than the number 10,000. Hours used for the purpose of producing earnings reported as productively invested income shall not be duplicated as hours of credit to meet the minimum requirements of the degree.
- (6) Have a record of outstanding leadership abilities and community involvement and have achieved a high school scholastic record of "C" or better as certified by the principal or superintendent.
- (7) As of December 31 of the calendar year prior to the year the member is to receive the degree, have participated in at least 50 hours of community service within at least three different community service activities. These hours are in addition to and cannot be duplicated as paid or unpaid SAE hours.

ARTICLE VII. PROCEDURE FOR SELECTING AMERICAN FFA DEGREE RECIPIENTS

Section A. Applications for the Degree must be approved by the State Executive Director or representative(s) thereof and be received by the National Organization no later than midnight of June 30, or shown by postmark or other reliable evidence to have been mailed to the National Organization on or before June 15, prior to the national convention at which the degree is to be received.

Section B. Applications must be submitted on the official printed or computer-generated form provided by or approved by the National FFA Organization.

Section C. The National FFA Board of Directors shall review the American FFA Degree applications and recommend those candidates meeting the minimum qualifications. Final approval of the candidates shall be given by the delegates present at the national FFA convention.

ARTICLE VIII. EMBLEM

Section A. The official emblem of the Texas FFA Association/Texas Association of Future Farmers of America shall be the same as that of the National FFA Organization. It shall include five symbols, namely: the plow, representing the labor and tillage of the soil; the owl, representing wisdom; the rising sun, representing progress; a cross-section of an ear of corn, representing common agricultural interests; and an American eagle surmounting the cross-section of the ear of corn, representing the national scope of the organization. The emblem shall also include the letters, "FFA" and the words "Agricultural Education."

Section B. The emblem shall be uniform in all recognized units of the Texas FFA Association/Texas Association of Future Farmers of America. All members shall be entitled to display the emblem.

Section C. Greenhand FFA Degree recipients shall be entitled to wear the official bronze emblem pin; Chapter FFA Degree recipients shall be entitled to wear the official silver emblem pin; State FFA Degree recipients shall be entitled to wear the official gold emblem charm; and American FFA Degree recipients shall be entitled to wear the official gold emblem key.

Section D. Honorary Chapter FFA Degree recipients shall be entitled to wear either the official silver or gold emblem pin; Honorary State FFA Degree recipients shall be entitled to wear the official gold emblem charm; and Honorary American FFA Degree recipients shall be entitled to wear the official gold emblem key.
Section E. Collegiate FFA chapter members and FFA advisors shall be entitled to wear the official gold owl pin.

ARTICLE IX. NATIONAL OFFICER CANDIDATE PROCEDURE FOR ELECTION

Section A. To represent the Texas FFA Association/Texas Association of Future Farmers of America at the National Convention, a National Officer Candidate must:

- (1) Meet all qualifications of eligibility to serve as a National Officer according to the National FFA Constitution.
- (2) Receive the nomination from the candidate's respective Area to represent that Area as their national officer candidate at the Texas FFA Convention.
- (3) Be elected as the National Officer Candidate representing Texas by a majority vote of the delegates present at the state convention preceding the national convention at which the candidate is to run for National office.

ARTICLE X. ELECTION, SUCCESSION, REPLACEMENT AND DISCHARGE OF STATE OFFICERS

Section A. The elected officers of the Texas FFA Association/Texas Association of Future Farmers of America shall be selected and nominated by each of the Area Associations. Each of these officers has an opportunity to demonstrate FFA, agricultural education, parliamentary procedure and agricultural industry knowledge via a written exam, present their qualifications to an evaluation committee and appear before the state convention body delegates and deliver a campaign speech. A president shall be elected from the state officers by a combination of exam score, 20 percent, interview score, 30 percent and a score derived from the vote of the delegates present, 50 percent.

The state elections committee shall consist of the outgoing state officers, with the State Executive Board acting as an advisory committee. The chairman of the elections committee shall be a current state officer designated by the board of directors.

Chairman of the Board of Directors shall act as chairman of the advisory committee. These two committees will work in conjunction with each other on all decisions concerning the election. Results of all elections will be announced as seen fit by the two committees. No results will be posted concerning the election, and any questions concerning the election shall be taken up with the chairman of the advisory committee. The winner of the final election shall be declared President of the State Association, and the candidate receiving the second highest score total in the final runoff election shall be declared the first vice-president. The remaining officers shall be called vice-presidents, and shall assume the stations of the various other FFA offices for ceremonial purpose at the annual convention and other meetings throughout the year.

Section B. If for any reason a student officer becomes vacant, the area from which the vacancy occurs shall elect another student officer. If for any reason the office of President should become vacant, the student officer who received the next highest score in the election for President shall become President.

Section C. The officers of the areas, districts and local chapters shall be President, Vice-President, Secretary, Treasurer, Reporter, Sentinel, Advisor, and other officers if desired. All of these officers must be active FFA members and be enrolled in high school throughout the duration of their term.

Section D. The elected officers shall constitute the Board of Student Officers. It shall be the duty of this Board to advise and make recommendations to the Texas FFA Board of Directors with respect to the activities and business of the Texas FFA Association/Texas Association of Future Farmers of America.

Section E. Each Area Association may elect one state officer each year. The state officer shall be elected by a combination of exam score, 20 percent, interview score, 30 percent and a score derived from the vote of the delegates present, 50 percent and in accordance to policies adopted by the State FFA Board of Directors.

Section F. The state officers shall hold the State FFA Degree at the time of their election at the state convention must be active members for the duration of their term in office and must not be more than one year removed from high school graduation at the time of their nomination by their respective area association.

Section G. State FFA Officers shall serve from one state convention through the next succeeding state convention and shall not be reelected, nor eligible for election to another state office. In the event a state

convention is not held in any given year, the State Board of Directors shall make provisions for the appointment of state officers for the next succeeding year. The State FFA Board of Directors shall have the power to appoint a qualified member to fill any office which becomes vacant between state conventions.

Section H. Officers may be suspended by the Executive Director for violations of the officer code of conduct, student officer disciplinary policy, association ethics policies or other relevant policies pursuant to policies and procedures enacted by the Board of Directors. Officers may be discharged by the State Executive Board for serious violations of applicable policies in accordance to policies and procedures enacted by the Board of Directors. Policies governing suspension and removal shall include provisions for appropriate disciplinary steps, due process and appeals.

ARTICLE XI THE STATE EXECUTIVE DIRECTOR AND THE PROGRAM DIRECTOR FOR AGRICULTURAL, FOOD AND NATURAL RESOURCES

Section A. The Board of Directors shall employ an Executive Director to lead the operations of the Texas FFA Association in accordance to the Texas FFA Association Constitution and Bylaws and policies adopted by the State FFA Board of Directors and in harmony with the instructional objectives of the Agriculture, Food and Natural Resources program.

Section B. The FFA is an integral part of the agricultural education instructional program. The Program Director for Agriculture, Food and Natural Resources, Texas Education Agency, shall be consulted to provide advice and oversight to ensure Texas FFA Association programs and policies are in accordance with and fulfilling the needs of Agriculture, Food and Natural Resources instructional goals and comply with all relevant state laws and agency rules.

ARTICLE XII. AREA, DISTRICT, AND CHAPTER OFFICERS

Section A. The offices of the Area FFA Associations shall be: President, Vice-President, Secretary, Treasurer, Reporter, and Sentinel. Other officers may be elected as deemed appropriate by the Area Association. Area officers shall serve no more than one full term. The advisor of the area president shall be the Area Advisor. If an officer moves out of his or her respective area, the office will be vacated and replacement will be elected according to Area Constitution.

Section B. The offices of the District Association shall be: President, Vice-President, Secretary, Treasurer, Reporter, and Sentinel. Other officers may be elected as deemed necessary by the District Association. The advisor of the district president shall be the District Advisor. If an officer moves out of his or her respective district, the office will be vacated and replacement will be elected according to District constitution.

Section C. The offices of local Chapters shall be: President, Vice-President, Secretary, Treasurer, Reporter, and Sentinel. Other officers may be elected as provided for by the Chapter constitution. The advisor of the chapter shall be the Agricultural Science Teacher(s) in that school. If an officer moves to another chapter, the office will be vacated and replacement will be elected according to the Chapter constitution.

Section D. If a chapter has been chartered for two or more years, officers shall have attained the Chapter FFA Degree.

ARTICLE XIII. MEETINGS AND CONVENTIONS

Section A. Except in case of an extreme emergency declared by the State FFA Board of Directors a convention of the Texas FFA Association/Texas Association of Future Farmers of America shall be held annually. The time and place of the convention shall be determined by the governing body Board of Directors, but must be held at least 60 days prior to the National Convention.

Section B. At the State Convention, each local chapter shall be entitled to send one delegate from its active membership, plus one additional delegate for 50 members, or any fraction thereof, above the first 50 members. A quorum shall exist when delegates representing more than 50% of the chapters registered for convention are present.

Section C. Except in cases of extreme emergency, Area conventions shall be held annually prior to the State Convention at a time selected by the Area Association.

Section D. Cumulative and proxy voting are prohibited. In election processes requiring two votes, a ballot must have two votes cast to constitute a legal ballot.

ARTICLE XIV. COMMITTEES

Section A. The Texas FFA President shall appoint all student committees with the advice and consent of the Executive Board and/or the Board of Directors. In such cases which present potential conflict of interest in

committee appointments, such committees shall be appointed by a consensus of the Board of Student Officers with the consent of the Board of Directors.

Section B. The Chairman of the Board of Directors shall appoint adult committees formed for the purpose of policy development.

Section C. The Executive Director shall appoint adult committees for the purpose of programmatic development or provide for such appointments in accordance to policies adopted by the State FFA Board of Directors.

ARTICLE XV. STATE FFA BOARD OF DIRECTORS

Section A. Governing Body

- (1) The governing body of the Texas FFA Association shall be the Texas FFA Board of Directors consisting of the current president, vice president and secretary-treasurer of the VATAT, the immediate past president of the VATAT and the past immediate past president of the VATAT, a current Agricultural Science teacher elected at-large, the Executive Director of the VATAT, six representatives of agribusiness/agriculture, one school administrator, one teacher educator, and the Executive Director of the Texas FFA Foundation. The immediate past president of the VATAT shall serve as vice chairperson of the board and as chairperson elect. The past immediate past VATAT president shall serve as chairperson of the board of directors. In the absence of the chairperson, the vice chairperson shall serve as chairperson. In the absence of the chairperson and vice chairperson, the chairperson shall designate chairperson from the board to preside over meetings of the State FFA Board of Directors. The Program Director of Agricultural Food and Natural Resources, Executive Director of the Texas FFA and a Texas FFA Alumni Association representative shall be ex-officio members of the Board of Directors. The Board of Directors may appoint consultants as deemed necessary.
- (2) The terms of office of members of the State FFA Board of Directors and the selection of such members shall be prescribed in the Bylaws.
- (3) The State FFA Board of Directors shall meet at least once a year at such time and place as may be prescribed by the board and shall present an annual report.
- (4) Duties: The State FFA Board of Directors shall review decisions and proposals of the Board of Student Officers. The State Board of Directors shall have final authority in all matters pertaining to the Texas FFA Association/Texas Association of Future Farmers of America within policies of the Texas Education Agency and without violating the Texas FFA Constitution and Bylaws or the National FFA Constitution and Bylaws.

Section B. Executive Board: The Executive Board consisting of the Chairman of the State FFA Board of Directors, Executive Director of the Texas FFA Association, Executive Director of the Texas FFA Foundation, Program Director for Agriculture, Food and Natural Resources, Texas Education Agency, State FFA President or another designated state officer and the Executive Director of the Vocational Agriculture Teachers Association of Texas to serve as the Executive Board which shall have the power to deal with items of business of the Texas FFA Association/ Texas Association of Future Farmers of America in accordance with the Texas FFA Constitution and Bylaws and board adopted policies. All official policy actions of the Executive Board shall be approved by the State FFA Board of Directors.

ARTICLE XVI. DUES

Section A. Annual Membership dues in the Texas FFA Association/Texas Association of Future Farmers of America shall be fixed by a majority vote of the delegates at the Texas FFA Convention. Local chapters shall be notified of a proposed dues change 30 days prior to the State FFA Convention.

Section B. The membership and fiscal year of the Texas FFA Association/Texas Association of Future Farmers of America shall be from September 1 to August 31.

Section C. The dues of any recognized unit of the Texas FFA Association/Texas Association of Future Farmers of America shall be determined by a majority vote of the delegates within each unit.

ARTICLE XVII. AMENDMENTS

Amendments to the Texas FFA Constitution and/or Bylaws may be submitted by an Area FFA Association, the Board of Student Officers, or State FFA Board of Directors. The proposed amendments to the State Constitution and/or Bylaws from an Area Association must be submitted in writing to the Texas FFA at least 60 days prior to the next State FFA Convention for review by the State FFA Board of Directors and the

Board of Student Officers. All proposed amendments to the Texas FFA Constitution and/or Bylaws must be submitted by the State Executive Director to the local chapters at least 30 days prior to the next State FFA Convention. The State FFA Officers shall present proposed constitutional amendments to the delegates convened at the State Convention for the purpose of conducting the business of the association. An amendment to the State FFA Constitution may be adopted by a two-thirds vote of the votes cast by the official delegates at the State Convention. An amendment to the Bylaws shall require a majority vote of the official delegates at the State FFA Convention. Amendments to the Bylaws must not conflict with the State or National FFA Constitutions.

ARTICLE XVIII. PARLIAMENTARY PROCEDURE

Section A. The Parliamentary Guide for FFA by Jarrell D. Gray shall be used as the final authority in governing the actions of all state FFA meetings.

Section B. The acting parliamentarian for all Texas State FFA meetings shall be the advisor of the winning Senior Chapter Farmer Chapter Conducting team of the previous State Leadership Contests.

TEXAS FFA ASSOCIATION BYLAWS

ARTICLE I. RELATIONSHIP TO CONSTITUTION

The Bylaws shall be a part of the Constitution of the Texas FFA Association/Texas Association of Future Farmers of America.

ARTICLE II. LOCATION OF OFFICES

The headquarters, principal office, and business offices of the Texas FFA Association/Texas Association of Future Farmers of America shall be at 614 East 12th Street; Austin, Texas, 78701

ARTICLE III. PROCEDURE FOR ELECTING MEMBERS OF THE BOARD OF DIRECTORS

Section A. The State FFA Board of Directors Nominating Committee shall consist of all members of the Executive Board and shall be chaired by a member of the Board of Directors appointed by the Chairman of the Board of Directors. The nominating committee shall nominate prospective directors to the full board for approval in accordance to policies promulgated by the State FFA Board of Directors.

Section B. Agricultural Educator Directors: Each year, the VATAT shall elect five directors at the summer meeting held in conjunction with the state professional improvement conference: the president, vice president and secretary-treasurer of the VATAT, immediate past president and past immediate past president of the VATAT. These positions shall be one-year terms to which a director may be re-elected, but hold the office no more than five consecutive terms. Vacancies in these positions shall be filled by the VATAT Executive Board. One teacher position shall be an at large position submitted by the nominating committee and elected by the State FFA Board of Directors for a three-year term. One teacher educator involved in the training of Agricultural Science instructors at a Texas University shall be nominated by the nominating committee and elected by the Board of Directors for a three-year term.

Section C. Agriculture/Agribusiness Industry/School Administrator Representatives: The agribusiness/agriculture representatives and school administrator shall be selected by the nominating committee from a group of nominations from the field of agriculture/agribusiness and school administrators.

Section D. Permanent Directorships: The Executive Director of the Vocational Agriculture Teacher's Association and the Executive Director of the Texas FFA Foundation shall serve on the board.

Section E. Elected members of the State FFA Board of Directors holding business and industry, school administrator, teacher educator or at-large teacher positions of the State FFA Board of Directors will serve three-year terms and shall serve no more than two consecutive terms. Vacancies on the State FFA Board of Directors shall be filled by the Board of Directors. The Executive Director of the VATAT and the Executive Director of the Texas FFA Foundation shall serve of the Board by position. The Executive Director of the Texas FFA Association, Program Director of Agriculture, Food and Natural Resources, Texas Education Agency shall serve as ex-officio member of the board by position. The ex-officio director representing the Texas FFA Alumni shall be elected by the Texas FFA Alumni Council.

Section F. Removal: Any officer or director may be removed by the Board of Directors whenever in its judgment the best interests of the organization would be served thereby in accordance to policies adopted by the State FFA Board of Directors.

ARTICLE IV. AREA AND DISTRICT ASSOCIATIONS

Section A. Except as allowed pursuant to Section C of this Article, the Areas of the Texas FFA Association/Texas Association of Future Farmers of America shall be:

- a. Area I consisting of the following Texas counties: Armstrong, Bailey, Briscoe, Carson, Castro, Childress, Cochran, Collingsworth, Cottle, Crosby, Dallam, Deaf Smith, Dickens, Donley, Floyd, Gray, Hale, Hall, Hansford, Hardeman, Hartley, Hemphill, Hockley, Hutchinson, King, Lamb, Lipscomb, Lubbock, Moore, Motley, Ochiltree, Oldham, Parmer, Potter, Randall, Roberts, Sherman, Swisher and Wheeler;
- b. Area II consisting of the following Texas counties: Andrews, Borden, Brewster, Coke, Concho, Crane, Crockett, Culberson, Dawson, Ector, Edwards, El Paso, Fisher, Gaines, Garza, Glasscock, Haskell, Howard, Hudspeth, Irion, Jeff Davis, Jones, Kent, Kimble, Loving, Lynn, Martin, Menard, Midland, Mitchell, Nolan, Pecos, Presidio, Reagan, Reeves, Schleicher, Scurry, Sterling, Stonewall, Sutton, Terrell, Terry, Tom Green, Upton, Val Verde, Ward, Winkler and Yoakum;
- c. Area III consisting of the following Texas counties: Brazoria, Fort Bend, Galveston, and Harris;
- d. Area IV consisting of the following Texas counties: Archer, Baylor, Brown, Callahan, Comanche, Clay, Coleman, Eastland, Erath, Foard, Hamilton, Jack, Knox, Mills, Montague, Palo Pinto, Parker, Runnels, Shackelford, Stephens, Taylor, Throckmorton, Wichita, Wilbarger, Wise and Young;
- e. Area V consisting of the following Texas counties: Collin, Cooke, Dallas, Denton, Fannin, Grayson, Hunt, Kaufman, Rockwall, Tarrant and;
- f. Area VI consisting of the following Texas counties: Bowie, Camp, Cass, Delta, Franklin, Gregg, Harrison, Hopkins, Lamar, Marion, Morris, Panola, Rains, Red River, Rusk, Smith, Titus, Upshur, Van Zandt and Wood;
- g. Area VII consisting of the following Texas counties: Bandera, Bexar, Blanco, Burnet, Comal, Gillespie, Guadalupe, Hays, Kendall, Kerr, Kinney, Lampasas, Llano, Mason, McCulloch, Medina, Real, San Saba, Uvalde, and Wilson;
- h. Area VIII consisting of the following Texas counties: Anderson, Bosque, Coryell, Ellis, Freestone, Henderson, Hill, Hood, Johnson, Limestone, McLennan, Navarro and Somervell;
- i. Area IX consisting of the following Texas counties: Angelina, Chambers, Cherokee, Hardin, Houston, Jasper, Jefferson, Leon, Liberty, Madison, Nacogdoches, Newton, Orange, Polk, Sabine, San Augustine, San Jacinto, Shelby, Trinity, Tyler and Walker;
- j. Area X consisting of the following Texas counties: Aransas, Atascosa, Bee, Brooks, Cameron, Dimmit, Duvall, Frio, Goliad, Hidalgo, Jim Hogg, Jim Wells, Karnes, Kenedy, Kleburg, La Salle, Live Oak, Maverick, McMullen, Nueces, Refugio, San Patricio, Starr, Webb, Willacy, Zapata and Zavala;
- k. Area XI consisting of the following Texas counties: Austin, Caldwell, Calhoun, Colorado, Dewitt, Fayette, Gonzales, Grimes, Jackson, Lavaca, Matagorda, Montgomery, Victoria, Waller, Washington and Wharton; and
- l. Area XII consisting of the following Texas counties: Bastrop, Bell, Brazos, Burleson, Falls, Lee, Milam, Travis, Robertson and Williamson.

Section B. Area Re-Alignments: The Texas FFA Association Board of Directors shall review area alignments contained in these bylaws and consider an area realignment resolution at least every ten years. Area realignments shall not divide school districts into separate area associations. For the purpose of area alignment, chapters shall be associated with the county in which the school district is headquartered.

Section C. In accordance to policies and procedures established by the board of directors, a chapter, by means of a resolution of the school district's board of trustees, may petition the board of directors to be assigned to an adjacent area association. Should the board of directors grant an area reassignment request, the reassignment shall be considered temporary and will be referred to the Area Realignment Commission in any subsequent realignment to consider whether such assignment may be recommended to made permanent.

Section D. District Associations: Each area association shall have district associations apportioned in relationship to membership, number of chapters and other appropriate considerations. Each area association

shall consider a district realignment resolution every five years in accordance to policies adopted by the area association. New districts may be formed by the area association with the approval of the State FFA Board of Directors.

ARTICLE V. STATE FFA BOARD OF DIRECTORS MEETING

Section A. The meetings of the State FFA Board of Directors shall be held at such place and time as prescribed by the Board.

Section B. Special meetings of the board may be called by the chairperson.

ARTICLE VI. DUTIES OF STATE OFFICERS

Section A. President. It shall be the duty of the President to preside over the state convention and meetings of the state officers. The President shall appoint all student committees in harmony with the provisions of the State FFA Constitution and policies adopted by the State FFA Board of Directors and may serve as an ex-officio member of these committees.

Section B. Vice-Presidents. It shall be the duty of each Vice-President to represent the membership of the Texas FFA Association/Texas Association of Future Farmers of America. Should the office of the President become vacant, the first Vice-President shall assume the duties of the President. It shall be the duty of the first Vice-President to keep minutes of the meetings of the State FFA Officers and perform other duties as directed by the State FFA Board of Directors and/or the State FFA Executive Director.

ARTICLE VII. DUTIES OF THE STATE FFA EXECUTIVE DIRECTOR

The Executive Director: It shall be the duty of the Texas FFA Executive Director to:

- (1) Issue charters to local chapters when directed to do so by the State Board of Directors.
- (2) Keep official records of members and the progress of the Association.
- (3) Review all reports from Area Associations and inform the State FFA Board of Directors of any proceedings which conflict with the provisions of the Texas FFA Constitution.
- (4) Submit an annual budget to the State FFA Board of Directors.
- (5) Provide for complete and accurate minutes of the meetings of the Governing Body and furnish copies to members of the State FFA Board of Directors.
- (6) Keep a record of all officers of the Texas FFA Association/Texas Association of Future Farmers of America and their terms of office, and of all official state convention delegates.
- (7) Arrange for the annual state convention.
- (8) Be responsible for the financial assets of the organization, except as otherwise directed by the State FFA Board of Directors.
- (9) Present an annual financial report to the State FFA Board of Directors, Texas FFA Officers, and official delegates at the state convention.
- (10) Advise the State FFA Officers, Board of Directors, delegates, and committees on matters of policy and assist the Officers in conducting meetings and carrying out programs.
- (11) Serve as an ex-officio member of all committees.
- (12) Provide for the review of all applications and submit them to the Board of Directors for approval.
- (13) Provide oversight for all organizations which fall under the jurisdiction of the State FFA Board of Directors.
- (14) Coordinate and oversee competitive events and student recognition programs sanctioned by the State FFA Board of Directors.
- (15) Approve usage of and oversee use the FFA emblem and trademarks in accordance to the policies of the National FFA Organization and Texas FFA Association.
- (16) Provide oversight and leadership to the staff of the Texas FFA Association in accordance to State FFA Board policies.

ARTICLE VII. REPORTS TO THE TEXAS FFA ASSOCIATION/ TEXAS ASSOCIATION OF FUTURE FARMERS OF AMERICA

Section A. Each Area Association shall submit the following information annually to the Texas FFA Association/Texas Association of Future Farmers of America.

- (1) A list of current Area FFA officers.
- (2) A report of any changes in, or amendments to, the Area Association constitution and bylaws.
- (3) An Association Annual Report as may be requested by the State FFA Board of Directors.

Section B. Each District FFA Association shall submit the following information annually to the Texas FFA Association/Texas Association of Future Farmers of America.

- (1) A list of current District FFA officers.
- (2) A report of any changes in, or amendments to, the District FFA Association constitution and bylaws.

Section C. Each Active FFA Chapter shall submit the following information to the Texas FFA Association/Texas Association of Future Farmers of America.

- (1) A list of current Chapter FFA officers.
- (2) A complete list of the names and addresses of all active FFA members.
- (3) A total of all student enrolled in the local Agriculture, Food and Natural Resources program.
- (4) A report of any changes in, or amendments to, the chapter constitution and bylaws.
- (5) Other information as may be requested by the State FFA Board of Directors.

**ARTICLE VIII. POLICIES AND PROCEDURAL
GUIDELINES OF THE TEXAS FFA ASSOCIATION**

The Texas FFA Association shall establish policies and procedural guidelines for addressing and resolving complaints of a state concern. These guidelines will be available upon request from appropriate levels. The Board of Directors may modify the guidelines as they deem necessary.

Agricultural Education / Texas FFA Organizational Chart

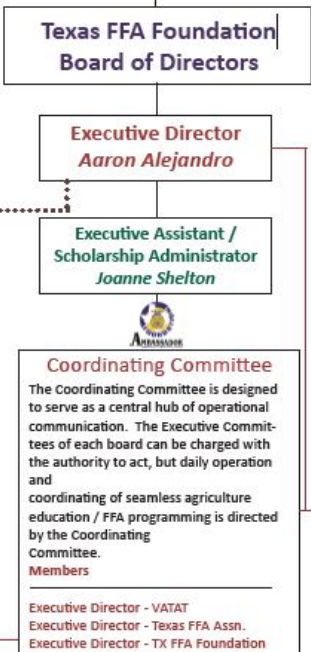
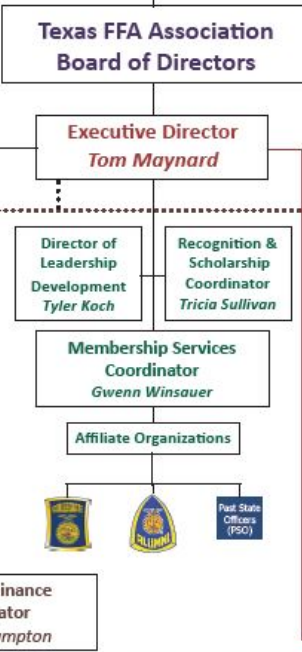
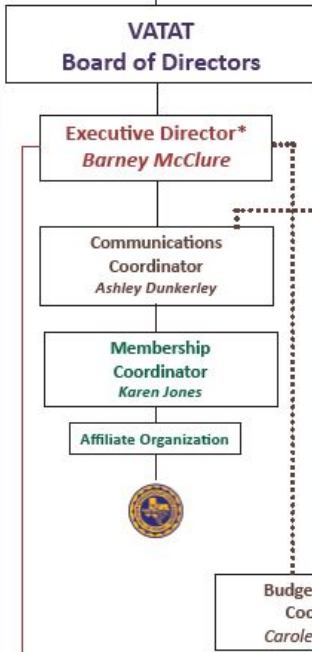


Teachers / Profession

Students / Programs

Development

Curriculum



* The Executive Director of the VATAT will serve in an inner-office role as Chief Operations Officer (COO) for the Texas FFA Foundation. Each Executive Director is responsible for the operations of their respective organizations. Each Executive Director is accountable to their respective Board of Directors, Executive and Personnel Committees.

In addition to the governing boards and personnel listed on the organizational chart, each entity operates with an open door policy and encourages input from teachers, students, supporters and the public to improve the functions of agriculture education and FFA programming in Texas. Additionally, more than 20 committees provide critical feedback and suggestions for operational excellence.

TEXAS FFA STATE PRESIDENTS

Howard Strother, Mount Pleasant 1929-30
Miller Rhoades, Taylor 1930-31
Odell Nevis, Abilene 1931-32
Pat Stout, Stockdale 1932-33
R.J. Stuteville, Gustine 1933-34
Herbert Mills, Sterling City 1934-35
Tyson Barnes, Kemp 1935-36
Joe Roper, Lufkin 1936-37
Oscar Dodson, Chillicothe 1937-38
O.A. Lowe, Livingston 1938-39
Haskell Lindley, Mount Vernon 1939-40
C.G. Scruggs, McGregor 1940-41
Ray Herman, Caldwell 1941-42
Dixon Manly, Cotulla 1942-43
Nolan Haught, Iredell 1943-44
Keeseey Kimbell, Alpine 1944-45
Gerald Sauls, Richardson 1945-46
James Hancock, Timpson 1946-47
Clois Dean Wiseman, Sudan 1947-48
Jimmy Darling, Abilene 1948-49
Kenneth Gregg, Plainview 1949-50
Weldon Mason, Meadow 1950-51
Franklin Brandt, La Grange 1951-52
Joe Dan Boyd, Winnsboro 1952-53
John Hagler, La Grange 1953-54
David Risinger, Ferris 1954-55
Royce Bodiford, Millsap 1955-56
Kenton Harvey, Azle 1956-57
Billy Penn, Lufkin-Hudson 1957-58
Billy McDowell, Whitewright 1958-59
James B. Prewitt, Kirbyville 1959-60
Joe Dan Penn, Lufkin-Hudson 1960-61
James Morris, Anahuac 1961-62
Jerry Clark, Buna 1962-63
Benny G. Mays, Sulphur Springs 1963-64
Calvin Brints, Crosbyton 1964-65
Kenneth E. Graeber, Brenham 1965-66
Marcus Hill, Sulphur Springs 1966-67
Danny Burns, Pittsburg 1967-68
Bill Sarpalius, Boys Ranch 1968-69
Murray Edwards, Clyde 1969-70
Barham Fulmer, Nacogdoches 1970-71
Alan Jones, Longview 1971-72
Frederick McClure, San Augustine 1972-73
Bobby Tucker, Mineola 1973-74
Doug Leggett, Wall 1974-75
Mark Ellison, Rosebud-Lott 1975-76
Ken Johnson, Nacogdoches 1976-77
Elvin Caraway, Spur 1977-78
Mark Baker, Arlington 1978-79
Davis Alders, Nacogdoches 1979-80
John Ragland, Brenham 1980-81
Rafe Forman, Idalou 1981-82
Randy Brady, Humble 1982-83
Brad Bass, Mount Vernon 1983-84
Coby Shorter III, Rice Consolidated 1984-85
Aaron Alejandro, Boys Ranch 1985-86
Bruce Cobb, Lubbock-Cooper 1986-87
Toby Miller, Whitharral 1987-88

Donnell Brown, Thockmorton 1988-89
Jeff Rash, Gilmer 1989-90
Matt Owen, Florence 1990-91
Erica Clark, Mansfield 1991-92
Curtis Childers, Glen Rose 1992-93
Scot Pollok, Falls City 1993-94
Jason Johnson, Mount Pleasant 1994-95
Corey Rosenbusch, Glen Rose 1995-96
Tanessa Saathoff, Devine 1996-97
Bubba Shipley, Fairfield 1997-98
Brandon Hill, Arlington-Martin 1998-99
Adam Byrd, Union Grove 1999-00
Dustin Kinder, Livingston 2000-01
Kurtis Thomas, Pasadena 2001-02
Lindsay Allen, Alvin 2002-03
Tobin Redwine, Lazbuddie 2003-04
Brandi Christie, Huntsville 2004-05
Logan West, Snyder 2005-06
Tyler Treptow, Weimar 2006-07
Justin Self, Troy 2007-08
Matthew Barnes, Alto 2008-09
Allison Grainger, Brenham 2009-10
Mason Parish, Caney Creek 2010-11
Peyton Gilbert, Whitehouse 2011-12
Blake Vineyard, Roosevelt 2012-13
Ryan Cox, Mt. Pleasant 2013-14
Gracie Hedrick, Groesbeck 2014-15
Jason Edmondson, Burnet 2015-16
Jacob Traylor, Gilmer 2016-17

NATIONAL OFFICERS FROM TEXAS

1. Roy Martin, Vice President 1936-37
2. James Gunter, Vice President 1940-41
3. Marion Baumgardner, Vice President 1945-46
4. Wilbur Ray Dunk, Vice President 1947-48
5. Alton Brazell, Vice President 1948-49
6. Royce Bodiford, Vice President 1957-58
7. Teddy Ray Carruth, Vice President 1960-61
8. James Prewitt, Vice President 1961-62
9. Lowell Catlett, Vice President 1968-69
10. Dennis Pharris, Vice President 1969-70
11. Frederick McClure, Secretary 1973-74
12. Bobby Tucker, President 1975-76
13. Ken Johnson, President 1977-78
14. Elvin Caraway, Vice President 1978-79
15. David Alders, Vice President 1980-81
16. Brad Bass, Vice President 1984-85
17. Coby Shorter, Secretary 1985-86
18. Donnell Brown, President 1989-90
19. Lesa Ann King, Vice President 1990-91
20. Dennis Degner, Vice President 1992-93
21. Curtis Childers, President 1993-94
22. Andy McCall, Vice President 1995-96
23. Corey Rosenbusch, President 1996-97
24. Cody Nash, Vice President 1997-98
25. Trent McKnight, President 2000-01
26. Dustin Clark, Vice President 2002-03
27. Casey Hogan, Vice President 2003-04
28. Riley Branch, Vice President 2008-09
29. Randa Braune, Vice President 2009-1

Texas Education Code 29.182 – State Plan for Career and Technology Education

- (a) The agency shall prepare and biennially update a state plan for career and technology education that sets forth objectives for career and technology education for the next biennium and long-term goals for the following five years
- (b) The state plan must include procedures designed to ensure that:
 - (1) all secondary and postsecondary students have the opportunity to participate in career and technology education programs;
 - (2) the state complies with requirements for supplemental federal career and technology education funding; and
 - (3) career and technology education is established as a part of the total educational system of this state and constitutes an option for student learning that provides a rigorous course of student consistent with the required curriculum under Section 28.002 and under which a student may receive specific education in a career and technology program that:
 - (A) incorporates competencies leading to academic and technical skill attainment;
 - (B) leads to:
 - (i) an industry-recognized license, credential, or certificate; or
 - (ii) at the postsecondary level, an associate or baccalaureate degree;
 - (C) includes opportunities for students to earn college credit for coursework; and
 - (D) includes, as an integral part of the program, participation by students and teachers in activities of career and technical student organizations supported by the agency and the State Board of Education*

Career and Technical Student Organizations currently supported by the Texas Education Agency and State Board of Education:

- Business Professionals of America (BPA)
- Texas DECA
- Future Business Leaders of America (FBLA)
- Family, Career and Community Leaders of America (FCCLA)
- Health Occupations Students of America (HOSA)
- SkillsUSA
- Texas Association of Future Educators (TAFE)
- Texas FFA Association
- Texas Technology Students Association (TSTA)